

English Courses in England 2025



75 years' - teaching English to the world!

Learning the Anglo-Continental way

Why learn English at Anglo-Continental?

Anglo-Continental is an established English language school with 75 years' experience in teaching English to students from across the globe. The school was founded in 1950 and today our courses are regularly inspected and accredited by The British Council.

Our English language programmes have been developed over 75 years, with the emphasis on our students' individual requirements:

- Short-term and long-term courses to meet every need, including internationally recognised examinations
- Diagnostic entry testing for accurate placement
- Friendly, qualified and experienced teachers to help you with every aspect of your studies
- Tuition at all levels from Beginner to Advanced
- Modern techniques and real-life practice to build your confidence and help you to learn more easily
- Individual consultation with your personal teacher
- Special guidance and advice for academic study programme students and for university entry

Our Teachers

Having a recognised diploma-level qualification in teaching English to speakers of other languages is a requirement for our permanent teachers. In addition to this, they will also have extensive teaching experience in a variety of professional areas. It is a minimum requirement that teachers have a recognised English language teaching qualification i.e Cambridge CELTA, Trinity College TESOL Certificate or equivalent. Most teachers have a degree level qualification.

Within our established long-term team, a number of teachers have Masters level qualifications, some have qualified teacher status (QTS) and some have specialist subject qualifications. Many of these teachers have positions of responsibility according to their areas of expertise.

Our Mission

Excellence in English language teaching, training and testing – putting the student first.



Anglo-Continental English Language Levels	CEFR*	IELTS	TOEFL (IBT)
Beginner to Elementary	A1	2.5 - 3.0	-
Pre-Intermediate	A2	3.5 - 4.0	-
Intermediate	B1	4.5 - 5.0	32 - 45
Upper Intermediate	B2	5.5 - 6.5	46 - 93
Advanced	C1	7.0 - 7.5	94 - 109
Proficiency to Near Native	C2	8.0 - 9.0	110 - 120

* CEFR = Common European Framework



Contents

	Pages
Welcome to Bournemouth	4 - 5
Welcome to Anglo-Continental	6 - 7
General English Programme	8 - 10
Academic Study Programme	11 - 13
Examination Programme Preparation courses for:	14 - 17
<ul style="list-style-type: none"> • IELTS • B1 Preliminary • B2 First • C1 Advanced 	
Business and Specialised Programme English for:	18 - 21
<ul style="list-style-type: none"> • Business • Medical Professionals • Medical Students • Law 	
Executive Programme	22 - 25
<ul style="list-style-type: none"> • Mini Groups • Mini Group plus Individual Tuition • Intensive Individual Tuition 	
Club 50+ Programme	26 - 27
Teacher Training Programme	28 - 29
Online English lessons	30 - 32
Vacation Programme Ages 16 - 17	33 - 39
<ul style="list-style-type: none"> • General English • IELTS and General English 	
Young Learners and Teenagers Programme Ages 10 - 16	40 - 43
<ul style="list-style-type: none"> • General English 	
Parent and Child Supplement	44
Accommodation and student support	45 - 49
Excursions, activities, leisure and sports	50 - 53
Transfer services	54 - 55
Conditions of enrolment	56 - 57
General information	58 - 59
Aviation Prospectus	60



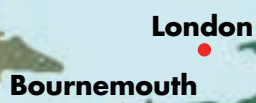


Bournemouth



Why Bournemouth?

- **Number one choice for students to study English outside of the capital**
- **Less than two hours from London**
- **University town**
- **Safe and easy to travel around with good transport links**
- **12 kilometres of Blue Flag and Seaside award-winning sandy beaches**
- **Shops, restaurants, cafés, cinemas, night clubs and theatres**
- **An extensive range of sports and leisure activities**
- **Beautiful parks and gardens**
- **World Heritage Jurassic Coastline**
- **New Forest National Park**
- **Poole's Historic Natural Harbour - largest in Europe**









General English Programme

Our Intensive courses have been developed over many years of teaching experience. Innovative and communicative teaching methods are used and form the basis of our teaching. Our General English Programme offers a choice of courses for everyone who needs an improved level of English for academic, social or professional reasons.

Your choice of courses

When you enrol, you can select the number of lessons per week which suits you best, and the course duration which meets your needs. You can be sure that, whether you are a complete beginner, or whether you already have a good understanding of the language, there will be a class suitable for you.

Your class

You will study in a lively international atmosphere with others whose levels of English are similar to your own. You will be taught by a team of two or three teachers, who encourage participation and interaction between members of the group - and English is the only language you will use!

Your lessons

Your lessons will be interesting and effective, with a variety of activities to develop your confidence, knowledge and skills:

- presentation and practice of new language
- rapid development of oral fluency, accuracy and conversation skills
- efficient development of listening, reading and writing skills
- extension of vocabulary, structure and usage

If you follow a course of 30 lessons per week, you will have the benefit of the **English for Success** Programme.

Outside your scheduled timetable, you will be able to use the multi-media learning centre and private study facilities.



Programme features

- Intensive English language tuition
- All levels from Beginner to Advanced
 - Flexible entry dates
- **English for Success** Programme
 - Free access to the multi-media learning centre
- Virtual learning environment - eAnglo

Intensive Courses 2025

Course number	G-1.20	G-1.30
Lessons per week (lesson duration: 45 minutes)	20	30
	20 Lessons of structured English language tuition with practice of: - listening - speaking - reading - writing - grammar - vocabulary	20 Lessons as G-1.20 Plus 10 Lessons - English for Success Develop general communication skills with the English for Success Programme including focus on: - Speaking and Listening for Success - Writing and Reading for Success
Language levels	Beginner* to Advanced	Beginner* to Advanced
CEFR levels	A1* - C1	A1* - C1
Class size	Average 10 (max.15)	Average 10 (max.15)
Minimum age	16	16
Course duration (weeks)	2 - 60	2 - 60
Courses held between	6 January - 19 December	6 January - 19 December
Course fees	British Pounds Sterling (£)	British Pounds Sterling (£)
First 2 weeks	770	1010
Each additional week	295	415
Reduced course fees available for courses of 20 weeks or more (pages 10 - 13)		
Accommodation fees British Pounds Sterling (£)	18+ Standard homestay - single room 16-17 year olds - Standard homestay - twin room including under 18s supplement	
First 2 weeks	470	 Bed and breakfast available. See page 47
Each additional week	200	
High season supplement (15 June to 2 August - per week)	50	
Single room supplement for 16-17 year olds (optional - per week)	30	
Pre-book Saturday excursions (14 June to 16 August - optional per week)	60	

Course fees include...

- Enrolment fee
- Entry test
- Tuition
- Textbooks and teaching materials
- Individual tutorials in the middle and at the end of each level
- Virtual learning environment - eAnglo
- Multi-media learning centre for personal study
- Educational Advisory Service
- Student card
- Certificate of Studies
- Orientation on first day
- Wi-Fi
- Sports and leisure activities information available online:
www.anglo-continental.com/leisure.html
- Services of the Student Support team

Standard homestay accommodation fees include...

- 18+ single room from the Sunday before course commencement to the Sunday after its completion
- 16-17 year olds twin room from the Sunday before course commencement to the Sunday after its completion.
- Accommodation fees include an under 18s supplement for monitoring
- Breakfast Monday to Sunday
- Evening meal Monday to Sunday
- Light lunch Saturday and Sunday
- Hot lunches may be purchased in the Anglo-Continental Student Centre
- Light laundry - once per week
- Wi-Fi

For further details of accommodation see pages 46 - 47.

Please note

- Course G-1.20 may have lessons in the afternoon on alternative weeks.
- The fees specified for these courses are valid from 1 January to 31 December 2025. For enrolments which commence or continue into the following year, revised fees will apply.

Airport transfers

- See pages 54 - 55.



These are prices for individual students. Contact us for a group quotation.

Online Lessons


If you wish to take online lessons before or after completion of your course please refer to pages 30 - 32.

Course entry dates 2025 G-1.20, G-1.30

January	February	March	April	May	June	July	August	September	October	November	December
6*, 13, 20, 27	3*, 10, 17, 24	3*, 10, 17, 24, 31*	7, 14, 22, 28*	6, 12, 19, 27*	2, 9*, 16, 23*, 30	7*, 14, 21*, 28	4*, 11, 18*, 26	1*, 8, 15, 22, 29*	6, 13, 20, 27*	3, 10, 17, 24*	1, 8

* Beginners may start their courses only on the entry dates marked with asterisks (*)

Long-Term Intensive Courses 2025

Course number	G-1.20L	G-1.30L
Lessons per week (lesson duration: 45 minutes)	20	30
	20 Lessons of structured English language tuition with practice of: - listening - speaking - reading - writing - grammar - vocabulary	20 Lessons as G-1.20 Plus 10 Lessons - English for Success Develop general communication skills with the English for Success Programme including focus on: - Speaking and Listening for Success - Writing and Reading for Success
Language levels	Beginner* to Advanced	Beginner* to Advanced
CEFR levels	A1* - C1	A1* - C1
Class size	Average 10 (Max. 15)	Average 10 (Max. 15)
Minimum age	16	16
Course duration (weeks)	20 - 60	20 - 60
Courses held between	6 January - 19 December	6 January - 19 December
Reduced course fees	British Pounds Sterling (£)	British Pounds Sterling (£)
First 20 weeks	5280	7280
Each additional week	255	355
<p>Students who enrol for Long-Term Intensive Courses receive help and guidance from our educational advisers and benefit from these specially reduced fees to help them achieve their academic or professional aims. Additional conditions apply, see page 57.</p>		
Accommodation fees British Pounds Sterling (£)	18+ Standard homestay - single room 16-17 year olds - Standard homestay - twin room including under 18s supplement	
First 2 weeks	470	
Each additional week	200	
High season supplement (15 June to 2 August - per week)	50	
Single room supplement for 16-17 year olds (optional - per week)	30	
Pre-book Saturday excursions (14 June to 16 August - optional per week)	60	

Course fees include...

- Enrolment fee
- Entry test
- Tuition
- Textbooks and teaching materials
- Individual tutorials in the middle and at the end of each level
- Virtual learning environment - eAnglo
- Multi-media learning centre for personal study
- Educational Advisory Service
- Student card
- Certificate of Studies
- Orientation on first day
- Wi-Fi
- Sports and leisure activities information available online:
www.anglo-continental.com/leisure.html
- Services of the Student Support team

Standard homestay accommodation fees include...

- 18+ single room from the Sunday before course commencement to the Sunday after its completion
- 16-17 year olds twin room from the Sunday before course commencement to the Sunday after its completion.
- Accommodation fees include an under 18s supplement for monitoring
- Breakfast Monday to Sunday
- Evening meal Monday to Sunday
- Light lunch Saturday and Sunday
- Hot lunches may be purchased in the Anglo-Continental Student Centre
- Light laundry - once per week
- Wi-Fi

For further details of accommodation see pages 46 - 47.

Please note

- Course G-1.20L may have lessons in the afternoon on alternative weeks.
- The fees specified for these courses are valid from 1 January to 31 December 2025. For enrolments which commence or continue into the following year, revised fees will apply.

Airport transfers

- See pages 54 - 55.

One-to-One Lessons

If you wish to supplement your course with one-to-one lessons please contact us.

Lesson duration:

45 minutes.

£ 64 per lesson.

Course entry dates 2025 G-1.20L, G-1.30L

January	February	March	April	May	June	July	August	September	October	November	December
6*, 13, 20, 27*	3*, 10, 17, 24	3*, 10, 17, 24, 31*	7, 14, 22, 28*	6, 12, 19, 27*	2, 9*, 16, 23*, 30	7*, 14, 21*, 28	4*, 11, 18*, 26	1*, 8, 15, 22, 29*	6, 13, 20, 27*	3, 10, 17, 24*	1, 8

* Beginners may start their courses only on the entry dates marked with asterisks (*)



Academic Study Programme

The Academic Study Programme is for students who need high standards of English to achieve their educational or career objectives. Your programme, leading to the Anglo-Continental Diploma in English, helps you to improve your English at an appropriate rate through the various language levels to Advanced (C1).

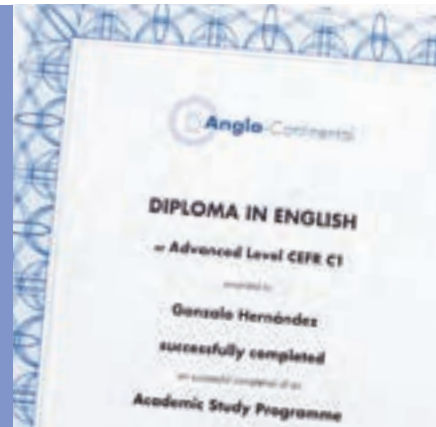
Personal Study Programme

Educational Advisers will assist you in choosing your study options based on your language level and will monitor your progress throughout your course. They will ensure that your rate of progress allows you to maximise your learning objectives.

If you plan to continue your education in Britain, our Advisers will even guide you through the process of applying for a place at the university of your choice.

Study options

Your language knowledge and skills are assessed and developed within an intensive general English course, supplemented by a number of special study options. Your progress will be carefully monitored throughout the programme. You will also have regular consultations with your Course Coordinator to ensure that the course meets your needs in order to obtain the best possible results.



Programme Features

- Individual Tutorials with the Course Coordinator
- Progress reports every 12 weeks, on request
 - Advice on further studies in the UK
 - Variety of course combinations
 - Examination options
- Choice of special options as you progress
- Virtual learning environment - eAnglo

Academic Study Courses 2025

Course number	A-1.30	
Lessons per week <small>(lesson duration: 45 minutes)</small>	30	
Special study options	Yes (See page 13)	
Examination practice options	Yes (See page 13)	
Language levels	Beginner* to Advanced	
CEFR levels	A1* - C1	
Class size	Average 10 (Max.15)	
Minimum age	16	
Course duration (weeks)	20 - 60	
Course held between	6 January - 19 December	
Reduced course fees	British Pounds Sterling (£)	
First 20 weeks	7785	
Each additional week	370	
Reduced course fees for long-term study		
Students who enrol for the Academic Study Programme benefit from these specially reduced fees to help them achieve their academic or professional aims - and help and guidance from our educational advisers. Additional conditions apply, see page 57.		
Accommodation fees <small>British Pounds Sterling (£)</small>	18+ Standard homestay - single room 16-17 year olds - Standard homestay - twin room including under 18s supplement	
First 2 weeks	470	
Each additional week	200	
High season supplement <small>(15 June to 2 August - per week)</small>	50	
Single room supplement for 16-17 year olds <small>(optional - per week)</small>	30	
Pre-book Saturday excursions <small>(14 June to 16 August - optional per week)</small>	60	



Course fees include...

- Enrolment fee
- Entry test
- Tuition and special study and examination options
- Textbooks and teaching materials
- Virtual learning environment - eAnglo
- Individual teacher tutorials in the middle and at the end of each level
- Individual Course Coordinator tutorials every 8 weeks
- Progress report every 12 weeks, on request
- Multi-media learning centre for personal study
- Educational Advisory Service
- Student card
- Certificate of Studies and Anglo-Continental Diploma (subject to satisfactory completion)
- Orientation on first day
- Wi-Fi
- Sports and leisure activities information available online:
www.anglo-continental.com/leisure.html
- Services of the Student Support team

Standard homestay accommodation fees include...

- 18+ single room from the Sunday before course commencement to the Sunday after its completion
- 16-17 year olds twin room accommodation fees include an under 18s supplement for monitoring
- Breakfast Monday to Sunday
- Evening meal Monday to Sunday
- Light lunch Saturday and Sunday
- Hot lunches may be purchased in the Anglo-Continental Student Centre
- Light laundry - once per week
- Wi-Fi

For further details of accommodation see pages 46 - 47.

Please note

- The fees specified for these courses are valid from 1 January to 31 December 2025. For enrolments which commence or continue into the following year, revised fees will apply.

Airport transfers

- See pages 54 - 55.

Course entry dates 2025 A-1.30

January	February	March	April	May	June	July	August	September	October	November	December
6*, 13, 20, 27*	3*, 10, 17, 24	3*, 10, 17, 24, 31*	7, 14, 22, 28*	6, 12, 19, 27*	2, 9*, 16, 23*, 30	7*, 14, 21*, 28	4*, 11, 18*, 26	1*, 8, 15, 22, 29*	6, 13, 20, 27*	3, 10, 17, 24*	1, 8

* Beginners may start their courses only on the entry dates marked with asterisks (*)



A Personal Study Programme is developed at the start of your Academic Study Course. Based on your level of English, the duration of your course and your goals, assistance will be given in helping you to select the right combination of study options from below:

General English + English for Success (from Beginner level)

- 10 lessons of Speaking and Listening for Success + 20 lessons of General English
- 10 lessons of Writing and Reading for Success + 20 lessons of General English

Academic Preparation (from Upper Intermediate level) Subject to availability.

- 10 lessons of Academic Preparation for school, college or university + 20 lessons of General English

Examination Preparation/Practice Subject to availability.

- 10 lessons of Examination Preparation for IELTS (from Pre-Intermediate level) + 20 lessons of General English
- 10 lessons of Examination Preparation for B1 Preliminary (from Intermediate level) + 20 lessons of General English
- 10 lessons of Examination Preparation for B2 First (from Upper Intermediate level) + 20 lessons of General English
- 10 lessons of Examination Preparation for C1 Advanced (from Advanced level) + 20 lessons of General English

Business and Specialised English (from Intermediate level) Subject to availability.

- 10 lessons of English for Business + 20 lessons of General English
- 10 lessons of English for Medical Professionals + 20 lessons of General English
- 10 lessons of English for Medical Students + 20 lessons of General English
- 10 lessons of English for Law + 20 lessons of General English





Examination Programme

At Anglo-Continental we successfully prepare our students for English language examinations, which are widely accepted in academic and commercial institutions throughout the world. We provide courses in preparation for mainstream examinations such as the International English Language Testing System (IELTS) and the University of Cambridge B2 First.

Courses are designed to develop the necessary skills relevant to the particular examination and to present and practise language appropriate to the students' needs. Timed practice tests provide an idea of what it is like to work under pressure during a real examination.

Examination Practice plus Intensive Courses

These courses aim to raise your level of general English by providing 20 lessons per week of intensive English language study. The general English classes will develop your confidence, knowledge and skills in English. These classes are combined with 10 lessons per week of practice for the examination of your choice: IELTS, B1 Preliminary, B2 First and C1 Advanced. Teachers will familiarise students with the format of the examination and will introduce strategies for dealing with typical questions.



Programme Features

- Examination preparation and practice for IELTS, B1 Preliminary, B2 First and C1 Advanced
- Individual Tutorials with the teacher and the Course Coordinator
- Free access to the multi-media learning centre
- Virtual learning environment - eAnglo

IELTS Examination Practice + Intensive Course 2025

Course number	X-2.30	
Course type	IELTS Examination Practice + Intensive Course	
Examination board	Cambridge English Language Assessment and The British Council - See note A	
Examination practice lessons	10	
General English lessons	20	
Total lessons per week <small>(lesson duration: 45 minutes)</small>	30	
Language levels for entry	Pre-Intermediate See note B	
CEFR levels for entry	A2 See note B	
Examination practice class size	Average 8 (Max. 12)	
Intensive English class size	Average 10 (Max. 15)	
Minimum age	16	
Course duration (weeks)	2 - 20	
Courses held between	6 January - 19 December	
Course fees	British Pounds Sterling (£)	
2 weeks	1055	
4 weeks	1875	
8 weeks	3515	
12 weeks	5155	
Each additional week	410	
Accommodation fees British Pounds Sterling (£)	18+ Standard homestay - single room 16-17 year olds - Standard homestay - twin room including under 18s supplement	
First 2 weeks	470	
Each additional week	200	
High season supplement <small>(15 June to 2 August - per week)</small>	50	
Single room supplement for 16-17 year olds <small>(optional - per week)</small>	30	
Pre-book Saturday excursions <small>(14 June to 16 August - optional per week)</small>	60	

Course fees include...

- Enrolment fee
- Entry test
- Tuition
- Textbooks and teaching materials
- Virtual learning environment - eAnglo
- Individual tutorials in the middle and at the end of each level (only applicable to the General English element of the course)
- Multi-media learning centre for personal study
- Educational Advisory Service
- Student card
- Certificate of Studies
- Orientation on first day
- Wi-Fi
- Sports and leisure activities information available online:
www.anglo-continental.com/leisure.html
- Services of the Student Support team

Standard homestay accommodation fees include...

- 18+ single room from the Sunday before course commencement to the Sunday after its completion
- 16-17 year olds twin room accommodation fees include an under 18s supplement for monitoring
- Breakfast Monday to Sunday
- Evening meal Monday to Sunday
- Light lunch Saturday and Sunday
- Hot lunches may be purchased in the Anglo-Continental Student Centre
- Light laundry - once per week
- Wi-Fi

For further details of accommodation see pages 46 - 47.

Examination fees

- The examination fees 2025 are not included in the course fees. They are published on the website from October 2024.

Please note

- The fees specified for these courses are valid from 1 January to 31 December 2025. For enrolments which commence or continue into the following year, revised fees will apply.

Airport transfers

- See pages 54 - 55.

Notes

A If you plan to take an examination, we recommend that you register for the examination in advance. Please check the website for examination closing dates:
www.anglo-continental.com/examination

B If you would like an indication of your English language level, you can take an online test. Final acceptance is subject to our examination pre-test or our entry test held at the school. If you have not yet reached the required level, you can first enrol for a period of preparation on a General English Course. See pages 8 - 10.

Course entry dates 2025 X-2.30


January	February	March	April	May	June	July	August	September	October	November	December
6	3	3, 31	28	27	9, 23	7, 21	11, 26	15	13	10	8



B1 Preliminary Examination Practice + Intensive Course

B2 First Examination Practice + Intensive Course

C1 Advanced Examination Practice + Intensive Course 2025

Course number	X-3.30	X-4.30	X-5.30
Course type	B1 Preliminary Examination Practice + Intensive Course	B2 First Examination Practice + Intensive Course	C1 Advanced Examination Practice + Intensive Course
Examination board	Cambridge English Language Assessment	Cambridge English Language Assessment	Cambridge English Language Assessment
Examination practice lessons	10	10	10
General English lessons	20	20	20
Total lessons per week <small>(lesson duration: 45 minutes)</small>	30	30	30
Language levels for entry	Intermediate See note B on page 15	Upper Intermediate See note B on page 15	Advanced See note B on page 15
CEFR levels for entry	B1 - See note B on page 15	B2 - See note B on page 15	C1 - See note B on page 15
Intensive English class size	Average 10 (Max. 15)	Average 10 (Max. 15)	Average 10 (Max. 15)
Examination practice class size	Average 8 (Max. 12)	Average 8 (Max. 12)	Average 8 (Max. 12)
Minimum age	16	16	16
Course duration (weeks)	4 - 16	8	8 or 12
Courses held between	6 January - 19 December	22 April - 13 June 13 October - 5 December	24 March - 13 June 15 September - 5 December
Course fees	British Pounds Sterling (£)	British Pounds Sterling (£)	British Pounds Sterling (£)
4 weeks	1875	~	~
8 weeks	3515	3515	3515
12 weeks	5155	~	5155
Each additional week	410	~	~
Accommodation fees British Pounds Sterling (£)	18+ Standard homestay - single room 16-17 year olds - Standard homestay - twin room including under 18s supplement		
First 2 weeks	470		
Each additional week	200		
High season supplement <small>(15 June to 2 August - per week)</small>	50		
Single room supplement for 16-17 year olds <small>(optional - per week)</small>	30		
Pre-book Saturday excursions <small>(14 June to 16 August - optional per week)</small>	60		

Course entry dates 2025

X-3.30											
January 6	February 3	March 3, 31	April 28	May 27	June 23	July 21	August 18	September 15	October 13	November 10	December 8
X-4.30											
January ~	February ~	March ~	April 22	May ~	June ~	July ~	August ~	September ~	October 13	November ~	December ~
X-5.30											
January ~	February ~	March 24	April 22	May ~	June ~	July ~	August ~	September 15	October 13	November ~	December ~



Examinations

The following examinations can be arranged:

- IELTS - International English Language Testing System
- A2 Key
- B1 Preliminary
- B2 First
- C1 Advanced
- C2 Proficiency
- TOEFL - Test of English as a Foreign Language
- OET - Occupational English Test
- BEC - Business English Certificates
- TKT - Teaching Knowledge Test

For examination dates and fees visit the website: www.anglo-continental.com/examination. The examination dates and fees 2025 are published on the website from October 2024.

Some of the examinations are subject to a minimum number of candidates.

Additional examination entry dates may be available. Please enquire for further details.



Anglo-Continental is an Examination Centre for:

- OET - Occupational English Test
- TKT - Teaching Knowledge Test
- TEAP - Test of English for Aviation Personnel

 **CAMBRIDGE ENGLISH**
Language Assessment
Authorised Centre



Business and Specialised Programme

For many business and professional people, the ability to speak English is a necessity for success. At Anglo-Continental, we offer a choice of scheduled and specially arranged courses to meet this need.

Scheduled Courses

Our short business and specialised courses cover the following areas:

- English for Business
- English for Medical Professionals
- English for Medical Students
- English for Law

They are suitable for people at all levels of an organisation, from administrative staff to management, and for students preparing for professional employment. They combine 20 lessons of intensive general English tuition with 10 lessons each week developing the language of your chosen specialisation - arranged in independent modules so that you can enrol for a period of time convenient to you. The essential language used in these specialised areas is listed on page 20.

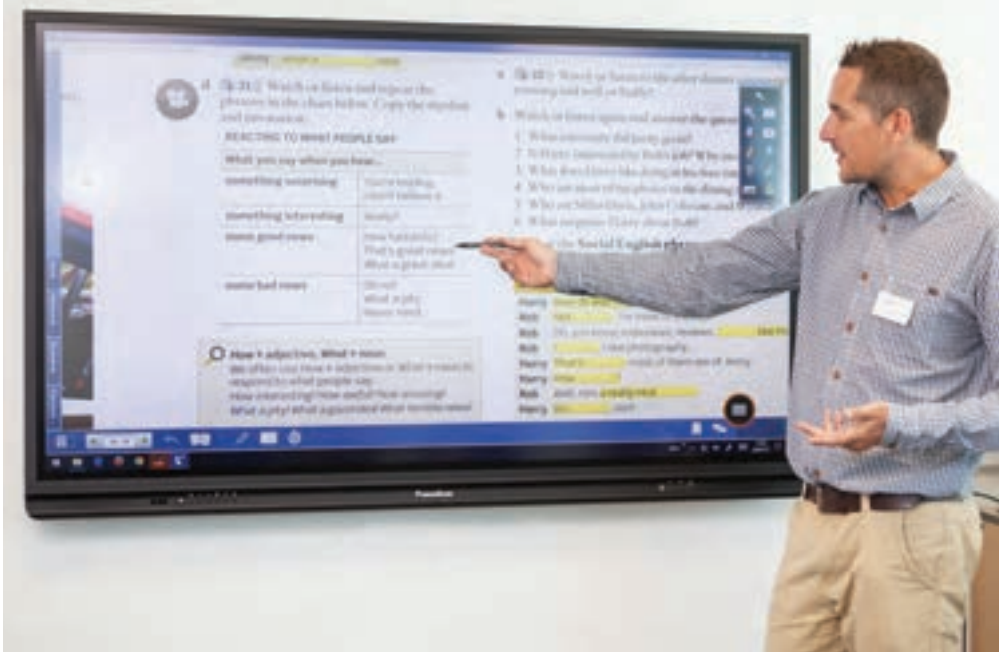
Business and Specialised Lessons

Your teachers, who have background knowledge of the subject of your choice, will use a wide variety of methods and materials, including authentic texts, documents and recorded material appropriate to your work. Role-play, student presentations, and guided and free discussion will improve your fluency and give you the realistic practice you need.

One-to-One Online Lessons

If you wish to take online lessons before or after completion of your course please refer to pages 30 - 32.





Additional Study

Homework (written assignments, preparation and revision) is an integral part of the course. We also recommend that some time should be devoted to additional study using eAnglo and the multi-media learning centre. Free wireless internet access is also available on campus.

Language Level for Entry

If you would like an indication of your English language level, you can take an online test before you enrol. This will be used as a guide and final acceptance is subject to our entry test held at the school. If you are not yet at the minimum level required, you will be transferred to the General English Programme.

Pre-Training Assessment

Final acceptance on the course is subject to our pre-training assessment. This is an assessment of the suitability of the course according to the background and qualifications of the client.

Group Bookings

Business and Specialised Courses are available for individuals and groups. Please contact us for a group quotation.

Guest Speakers

Once every two weeks a guest speaker will be organised.



Sample Timetables

Download sample Business and Specialised timetables from the website:

www.anglo-continental.com/bus-spec.pdf



English for Business

- Business background
- Customer care
- Networking and socialising
- Business correspondence and communication
- Negotiating business agreements
- Business proposals and quotations
- Meetings, conferences and presentations
- Preparing and analysing reports
- Curriculum vitae preparation
- Interviews and appraisals
- Telephoning and video conferencing skills
- Email communication

English for Medical Professionals

- Communication with patients and medical staff
- Explaining medical procedures
- Conducting medical examinations
- Taking histories and writing reports
- The hospital environment
- Care of medical and surgical patients
- Working within specialties
- Authentic medical films
- Medication – side effects, dosages and contra-indications
- Using medical documents

English for Medical Students

- Human anatomy
- Diseases and symptoms
- Taking histories
- Conducting medical examinations
- Medical publications and research
- Authentic medical films
- The World Health Organisation
- Reading and writing case histories
- Medication – side effects, dosages and contra-indications
- Evaluation of online medical websites and resources

English for Law

- Legal principles and practice
- International law
- Legal concepts, rights and obligations
- Negotiating contracts and agreements
- Company and commercial law
- Interviewing and advising clients
- Considering evidence and preparing a brief
- Presenting your case and arguing points of law
- Conferences, meetings and presentations



Programme Features

- Pre-training assessment
- Guest speakers
- Virtual learning environment - eAnglo
- Free access to the multi-media learning centre

Intensive Courses plus English for Business and Specialised Subjects 2025

Course number	B-1.30	S-5.30A	S-5.30B	S-6.30
Course type	English for Business	English for Medical Professionals	English for Medical Students	English for Law
General English lessons	20			
Specialised lessons	10			
Total lessons per week <small>(lesson duration: 45 minutes)</small>	30			
Guest speaker	1 every 2 weeks			
Language levels for entry	Intermediate to Advanced See note A			
CEFR levels for entry	B1 - C1 See note A			
General English - class size	Class average 10 (Max. 15)			
Specialised English - group size	Average 5 (Max. 8)			
Minimum age	18	21	18	18
Course duration (weeks)	2 - 4			
Course fees	British Pounds Sterling (£)			
First 2 weeks	1405			
Each additional week	575			
Accommodation fees <small>British Pounds Sterling (£)</small>	Standard homestay - single room		Executive homestay - single room	
First 2 weeks	470		700	
Each additional week	200		315	
High season supplement <small>(15 June to 2 August - per week)</small>	50		50	
Pre-book Saturday excursions <small>(14 June to 16 August - optional per week)</small>	60		60	

Course fees include...

- Enrolment fee
- Pre-training assessment
- Entry test
- Tuition
- Textbooks and teaching materials
- Virtual learning environment - eAnglo
- Guest speaker
- Use of the Executive Centre and facilities
- Multi-media learning centre for personal study
- Educational Advisory Service
- Student card
- Certificate of Studies
- Orientation on first day
- Wi-Fi
- Sports and leisure activities information available online: www.anglo-continental.com/leisure.html
- Services of the Student Support team

Standard homestay accommodation fees include...

- Single room from the Sunday before course commencement to the Sunday after its completion
- Breakfast Monday to Sunday
- Evening meal Monday to Sunday
- Light lunch Saturday and Sunday
- Hot lunches may be purchased in the Anglo-Continental Student Centre
- Light laundry - once per week
- Wi-Fi

For further details of accommodation see pages 46 - 47.

Airport transfers

- See pages 54 - 55.



Notes

- A** If you would like an indication of your English language level, you can take an online test. Final acceptance is subject to our examination pre-test or our entry test held at the school. If you have not yet reached the required level, you can first enrol for a period of preparation on a General English Course. See pages 8 - 10.

Course entry dates 2025

B-1.30, S-5.30A, S-6.30

January	February	March	April	May	June	July	August	September	October	November	December
6, 20	3, 17	3, 17, 31	14, 28	12, 27	9, 23	7, 21	11, 26	8, 22	13, 27	10, 24	8*

* 2 weeks only

S-5.30B

January	February	March	April	May	June	July	August	September	October	November	December
6, 20*	~	~	~	~	9, 23	7, 21	11, 26*	~	~	~	~

* 2 weeks only



Executive Programme

The Anglo-Continental Executive Programme provides stimulating language training for busy professionals. It is also the ideal environment for adults who wish to improve their English for cultural and social purposes. The tuition is highly intensive and offers the most effective way of learning or developing your English in the shortest possible time.

The Executive Centre

On this programme, you will study in our exclusive executive centre within our main campus. There are study rooms for mini groups and individuals and a comfortable private lounge for relaxation during your breaks – with computers and wireless internet access. Your specially selected teachers will ensure close attention to your educational needs.

Your Choice of Courses

The centre offers four categories of courses:

- **Intensive Study in a Mini Group**, in which you work with a very small, select group of people with similar levels of English to your own.
- **Intensive Study in a Mini Group plus Individual Tuition**, which combines group study with one-to-one lessons to meet your own particular needs.
- **Intensive Individual Tuition**, where you work with your personal team of two or three teachers, one-to-one.



Programme Features

- Pre-training assessment
- Optional preparation of a presentation with feedback from a teacher
 - Virtual learning environment - eAnglo
- Progress report and recommendations for further study on course completion
 - Exclusive use of computers in the executive lounge
- Use of the exclusive executive lounge
 - Lunch with a teacher
- Complimentary tea, coffee and biscuits

Executive Courses 2025

Course number	E-1.20	E-1.30
Course type	Intensive Study in a Mini Group	
General English lessons	20	30
Total lessons per week <small>(lesson duration: 45 minutes)</small>	20	30
Language levels for entry	Beginner to Advanced See note A	
CEFR levels for entry	A1 - C1	
General English - mini group size	Average 2 (Max. 4)	
Minimum age	21	
Lunch with a teacher	Included	
Course duration (weeks)	1 - 60 See note A	
Course fees	British Pounds Sterling (£)	British Pounds Sterling (£)
First week	1070	1410
Each additional week	870	1210
Accommodation fees British Pounds Sterling (£)	Executive homestay - single room	
First week	385	
Each additional week	315	
High season supplement <small>(15 June to 2 August - per week)</small>	50	
Pre-book Saturday excursions <small>(14 June to 16 August - optional per week)</small>	60	

Course fees include...

- Enrolment fee
- Pre-training assessment
- Entry test
- Tuition
- Textbooks and teaching materials
- Virtual learning environment - eAnglo
- Individual tutorial during your first week and every 2 or 4 weeks thereafter, depending on the length of your course
- End-of-course progress report
- Use of the Executive Centre lounge and facilities
- Multi-media learning centre for personal study
- Educational Advisory Service
- Student card
- Certificate of Studies
- Wi-Fi
- Lunch Monday to Friday (excluding public holidays) with a teacher
- Sports and leisure activities information available online: www.anglo-continental.com/leisure.html
- Services of the Student Support team

Executive homestay accommodation fees include...

- Single room from the Sunday before course commencement to the Sunday after its completion
- Breakfast Monday to Sunday
- Evening meal Monday to Sunday
- Light lunch Saturday and Sunday
- Exclusive use of a shower or bathroom and toilet facilities
- Light laundry - once per week
- Wi-Fi

For further details of accommodation see pages 46 - 47.

Airport transfers

- See pages 54 - 55.

Alternative accommodation

- Please see page 47.

Notes

- A** Participants at beginner to elementary levels are recommended to enrol for a minimum of 2 weeks.

Course entry dates 2025 E-1.20, E-1.30

January	February	March	April	May	June	July	August	September	October	November	December
6, 13, 20, 27	3, 10, 17, 24	3, 10, 17, 24, 31	7, 14, 22, 28	6, 12, 19, 27	2, 9, 16, 23, 30	7, 14, 21, 28	4, 11, 18, 26	1, 8, 15, 22, 29	6, 13, 20, 27	3, 10, 17, 24	1, 8

Executive Courses 2025

Course number	E-2.30	E-2.40	E-3.20	E-3.30
Course type	Intensive Study in a Mini Group plus Individual Tuition		Intensive Individual Tuition	
General English lessons	20	30	~	~
Individual lessons	10	10	20	30
Total lessons per week <small>(lesson duration: 45 minutes)</small>	30	40	20	30
Optional specialised individual tuition	Yes See section below		Yes See section below	
Language levels	Beginner to Advanced See note A		Beginner to Advanced See note A	
CEFR levels	A1 - C1 See note A		A1 - C1 See note A	
Mini group size	Average 2 (Max. 4) (Plus individual tuition)		Individual tuition	
Minimum age	21		21	
Lunch with a teacher	Included		Included	
Course duration (weeks)	1 - 60		1 - 60	
Specialised individual tuition	<p>If your English language level is Pre-Intermediate or above, 10 lessons of your weekly individual tuition may focus on specialised individual tuition in the English of your own personal choice, selected from:</p> <ul style="list-style-type: none"> • Aviation • Business • Examination Preparation • Finance • Human Resources • Legal Practice • Management • Marketing and Sales • Medical Practice • Military English <p>If the specialised subject you require is not listed, please contact us to check its availability.</p>			
Course fees	British Pounds Sterling (£)		British Pounds Sterling (£)	
First week	1840	2180	1840	2530
Each additional week	1570	1910	1570	2260
Accommodation fees British Pounds Sterling (£)	Executive homestay - single room			
First week	385			
Each additional week	315			
High season supplement <small>(15 June to 2 August - per week)</small>	50			
Pre-book Saturday excursions <small>(14 June to 16 August - optional per week)</small>	60			

Course fees include...

- Enrolment fee
- Pre-training assessment
- Entry test
- Tuition
- Textbooks and teaching materials
- Virtual learning environment - eAnglo
- Individual tutorial during your first week and every 2 or 4 weeks thereafter, depending on the length of your course
- End-of-course progress report
- Use of the Executive Centre lounge and facilities
- Multi-media learning centre for personal study
- Educational Advisory Service
- Student card
- Certificate of Studies
- Wi-Fi
- Lunch Monday to Friday (excluding public holidays) with a teacher
- Sports and leisure activities information available online: www.anglo-continental.com/leisure.html
- Services of the Student Support team

Executive homestay accommodation fees include...

- Single room from the Sunday before course commencement to the Sunday after its completion
 - Breakfast Monday to Sunday
 - Evening meal Monday to Sunday
 - Light lunch Saturday and Sunday
 - Exclusive use of a shower or bathroom and toilet facilities
 - Light laundry - once per week
 - Wi-Fi
- For further details of accommodation see pages 46 - 47.

Airport transfers

- See pages 54 - 55.

Alternative accommodation

- Please see page 47.

Notes

- A** Participants at beginner to elementary levels are recommended to enrol for a minimum of 2 weeks.

Course entry dates 2025 E-2.30, E-2.40 E-3.20, E-3.30

January	February	March	April	May	June	July	August	September	October	November	December
6, 13, 20, 27	3, 10, 17, 24	3, 10, 17, 24, 31	7, 14, 22, 28	6, 12, 19, 27	2, 9, 16, 23, 30	7, 14, 21, 28	4, 11, 18, 26	1, 8, 15, 22, 29	6, 13, 20, 27	3, 10, 17, 24	1, 8

One-to-One Online Lessons

If you wish to take online lessons after completion of your course please refer to pages 30 - 32.



Specialised Individual Tuition (Courses E-2.30, E-2.40, E-3.20 and E-3.30)

If your English language level is Pre-Intermediate or above, 10 lessons of your weekly individual tuition may focus on specialised individual tuition in the English of your own personal choice, selected from the subjects listed on page 24. If you choose examination preparation, you can prepare for any of the examinations listed on page 17.

Learning Objectives

Having identified your objectives and established your level, we plan your course and then monitor your progress throughout your programme:

- Pre-training assessment form
- Entry test and needs analysis
- Regular individual tutorials
- Weekly review of your learning priorities

Personalised Learning

You do not need to worry if you have a low level of English or if it has been a long time since you studied in the classroom. Whether you are a beginner or a graduate in English, the teaching will be productive, enjoyable and appropriate to your needs.





Great British Club 50+ Programme

More and more people in their fifties, sixties and beyond appreciate the attraction of a short, well-organised study programme - especially when it is combined with visiting and exploring new destinations. If you are fifty or over, this programme offers you the ideal opportunity to visit England for a stimulating and productive holiday.

Your classes

- You will study in a class where the minimum age is fifty, providing there are sufficient students at your level attending the course. In periods where we have lower student numbers, you will be taught in our General English Programme G-1.20, which has no upper age limit.
- The classroom approach is to create an informal atmosphere for purposeful learning, conducted at a pace suitable for those who may not have been in a classroom for many years.
- Our friendly and approachable teachers will make the classes interesting and enjoyable and will use modern teaching methods and materials to build your confidence in speaking English.
- Group activities will be arranged to improve your comprehension and communication skills, such as guided and free conversation practice, role play and discussion of aspects of British and international life, customs and culture.
- Learn in an international environment and make friends with people from many other countries.
- Free access to the multi-media learning centre.

Excursions, leisure activities

Outside the classroom, you will have the benefit of guided excursions to places of historical and cultural interest and of carefully arranged leisure activities. You will also have time for sightseeing and shopping on your own or with your new friends from the school.

Your accommodation

We normally provide accommodation with selected homestay families so that you will have no worries about your welfare and your meals. If you prefer to be independent, we can recommend alternative accommodation such as hotels or guest houses to meet your needs.



Programme Features

- Enjoyable English language tuition
- Virtual learning environment - eAnglo
- Relaxed conversation and discussion of current affairs and British life, customs and culture
 - From Elementary to Upper Intermediate level
- Special excursions and leisure activities
- Free access to the multi-media learning centre

Great British Over 50s Course 2025

Course number	F-1.20	
Course type	English Language and Cultural Activities	
Lessons per week <small>(lesson duration: 45 minutes)</small>	20	
Language levels	Elementary to Upper Intermediate	
CEFR levels	A1 - B2	
Class size	Average 10 (Max.15)	
Excursions	2 per week	
Leisure/cultural activities	2 per week	
Minimum age	50 - no upper limit	
Course duration (weeks)	2 - 4	
Course are held between	6 May - 31 May 11 August - 6 September	
Activities programme		
Excursions, leisure and cultural activities	For detailed information on excursions and activities, please ask for our Club 50+ timetable or visit our website at www.anglo-continental.com/club-50	
Course fees	British Pounds Sterling (£)	
First 2 weeks	1220	
Each additional week	520	
Accommodation fees <small>British Pounds Sterling (£)</small>	Standard homestay - single room	Executive homestay - single room
First 2 weeks	470	700
Each additional week	200	315
 Bed and breakfast available. See page 47		
Door-to-door car service from homestay to course centre <small>British Pounds Sterling (£)</small>		
6 journeys to the course centre from Monday to Saturday <small>(optional - per week)</small>	48	



These are prices for individual students. Contact us for a group quotation.

Course fees include...

- Enrolment fee
- Entry test
- Tuition
- Textbooks and teaching materials
- Virtual learning environment - eAnglo
- Multi-media learning centre for personal study
- Student card
- Certificate of Studies
- Orientation on first day
- Wi-Fi
- Excursions, leisure and cultural activities (including all entrance fees)
- Services of the Student Support team

Homestay accommodation fees include...

- Single room from the Sunday before course commencement to the Sunday after its completion
- Breakfast Monday to Sunday
- Evening meal Monday to Sunday
- Light lunch Saturday and Sunday
- Hot lunches may be purchased in the Anglo-Continental Student Centre
- Light laundry - once per week
- Wi-Fi

For further details of accommodation see pages 46 - 47.

Please note

- Students may be integrated into the G-1.20 classes.

Airport transfers

- See pages 54 - 55.

Partner programme

Your partner or a friend may come with you to England and participate in the excursions, leisure and cultural activities or the walks without taking the lessons. The programme fees (including VAT) are:

First 2 weeks £ 710
Each additional week £ 315

Homestay accommodation is charged separately.

Course entry dates 2025 F-1.20

January ~	February ~	March ~	April ~	May 6, 12, 19	June ~	July ~	August 11, 18, 26	September ~	October ~	November ~	December ~
--------------	---------------	------------	------------	------------------	-----------	-----------	----------------------	----------------	--------------	---------------	---------------



Teacher Training Programme

Anglo-Continental offers teacher training courses designed to develop the knowledge and teaching skills of people who teach English to secondary and adult learners, and also people who are interested in teaching as a career.

The course is designed and led by highly experienced EFL teachers to provide experienced and aspiring teachers with the confidence needed to teach in the world of teaching English.

Course T-1.20

20 lessons per week of language teaching methodology and personal language development. In this course, participants will explore and experience lively and creative teaching strategies and ideas designed to refresh their teaching and to develop and extend their own language proficiency. Contexts for language development work will reflect the interests of the group and will include aspects of British life and culture.



Additional Information

- Additional entry dates and test dates can be arranged for groups
- Virtual learning environment - eAnglo
- We are a test centre for the University of Cambridge Teaching Knowledge Test (TKT)



Authorised Centre

- For a sample timetable please visit our website at: www.anglo-continental.com/teacher-training

Language and Methodology of English Teaching 2025

Course number	T-1.20
Teaching methodology, English language development and British life and culture lessons	20
Minimum language levels for entry	Intermediate See note A
CEFR levels for entry	B1 See note A
Class size	Average 10 (Max. 15)
Minimum age	20
Course duration (weeks)	2, 3 or 4
Courses are held between	23 June - 1 August
Course fees*	British Pounds Sterling (£)
First 2 weeks	765
Each additional week	305
Accommodation fees British Pounds Sterling (£)	Standard homestay - single room
First 2 weeks	470
Each additional week	200
High season supplement (15 June to 2 August - per week)	50
Pre-book Saturday excursions (14 June to 16 August - optional per week)	60



* Inclusive of VAT where applicable.

Course fees include...

- Enrolment fee
- Pre-training assessment
- Entry test
- Tuition
- Textbooks and teaching materials
- Virtual learning environment - eAnglo
- Multi-media learning centre for personal study
- Educational Advisory Service
- Student card
- Certificate of Studies
- Orientation on first day
- Wi-Fi
- Sports and leisure activities information available online:
www.anglo-continental.com/leisure.html
- Services of the Student Support team

Standard homestay accommodation fees include...

- Single room from the Sunday before course commencement to the Sunday after its completion
- Breakfast Monday to Sunday
- Evening meal Monday to Sunday
- Light lunch Saturday and Sunday
- Hot lunches may be purchased in the Anglo-Continental Student Centre
- Light laundry - once per week
- Wi-Fi

For further details of accommodation see pages 46 - 47.

Please note

- Students may have their lessons either in the morning or in the afternoon on alternate weeks.

Airport transfers

- See pages 54 - 55.

Notes

A If you would like an indication of your English language level, you can take an online test. This will be used as a guide and final acceptance is subject to our entry test held at the school.

If you are not yet at the minimum level required, you will be transferred to a General English Course. See pages 8 - 10.

Course entry dates 2025 T-1.20

January	February	March	April	May	June	July	August	September	October	November	December
~	~	~	~	~	23, 30	7, 14, 21	~	~	~	~	~



Online English Language Programme

Study English Online with Anglo-Continental

Anglo-Continental's online English language programme offers a wide range of scheduled and specially arranged online courses as a perfect solution for students who need the flexibility of learning English in their own home or office.

Our experienced and fully qualified English language teachers will help each student achieve their learning objectives through live, interactive classes.

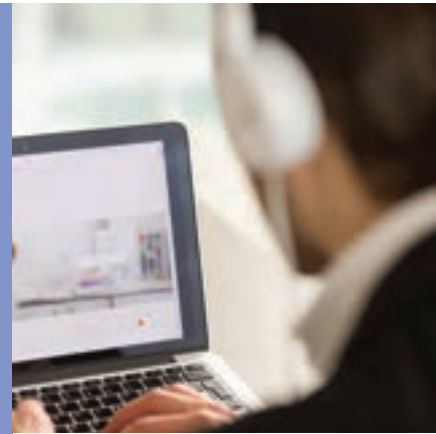
The live face-to-face online courses use Zoom technology, which enables each lesson to be fully interactive with daily feedback and guidance.

Online Courses available

Anglo-Continental offers a variety of online English language courses:

- Group General English Course.
- Group IELTS Preparation Course.
- Group Young Learners General English Course.
- Online one-to-one tuition. These courses can be General English and/or specialised English. If your English level is Intermediate or above, you may focus on specialised individual tuition in the English of your personal choice, selected from the following subjects:
 - Aviation
 - Business
 - Legal Practice
 - Examination Preparation
 - Management
 - Medical Practice
 - Marketing and Sales

If the specialised subject you require is not listed, please contact us to check its availability.



Online Group General English and IELTS Preparation Courses 2025

Course number	OG-1.04	OX-1.04
Course type	General English	IELTS Preparation
Lessons per week (lesson duration: 60 minutes)	3	3
Language levels	Elementary to Advanced	Intermediate to Advanced
CEFR levels	A1 - C1	B1 - C1
Class size	Average 8 (max.10)	Average 8 (max.10)
Minimum age	16	16
Course duration (weeks)	4 - 60	4 - 16
Course entry dates and lesson times	Visit www.anglo-continental.com/online	
Course fees	British Pounds Sterling (£)	British Pounds Sterling (£)
First 4 weeks	350	350
Each additional week	50	50

Course fees include...

- Enrolment fee
- Placement test
- Pre-course training session
- Online Tuition
- Virtual learning environment - eAnglo
- Access to online teaching materials
- Certificate of Studies

Online Group Young Learners General English Courses 2025

Course number	OYL-1.04
Course type	General English
Lessons per week (lesson duration: 60 minutes)	3
Language levels	Elementary to Advanced
CEFR levels	A1 - C1
Class size	Average 6 (max.8)
Age groups	11 - 16
Course duration (weeks)	4 - 60
Course entry dates and lesson times	Visit www.anglo-continental.com/online
Course fees	British Pounds Sterling (£)
First 4 weeks	350
Each additional week	50



Course fees include...

- Enrolment fee
- Placement test
- Pre-course training session
- Online Tuition
- Virtual learning environment - eAnglo
- Access to online teaching materials
- Certificate of Studies

Online One-to-One English Courses 2025

Course number	O-1.04	O-1.08	O-1.20
Course type	One-to-One	One-to-One	One-to-One
Lessons per week (lesson duration: 60 minutes)	3	6	15
Language levels	Elementary to Advanced	Elementary to Advanced	Elementary to Advanced
CEFR levels	A1 - C1	A1 - C1	A1 - C1
Class size	Individual tuition	Individual tuition	Individual tuition
Minimum age	Available for all age groups (10+ years)	Available for all age groups (10+ years)	Available for all age groups (10+ years)
Course duration (weeks)	2 - 60	2 - 60	2 - 60
Course entry dates and lesson times	Visit www.anglo-continental.com/online		
Specialised individual tuition subjects available	<ul style="list-style-type: none"> • Aviation • Business • Legal Practice 	<ul style="list-style-type: none"> • Examination Preparation • Management 	<ul style="list-style-type: none"> • Medical Practice • Marketing and Sales
	If the specialised subject you require is not listed, please contact us to check its availability.		
Course fees	British Pounds Sterling (£)	British Pounds Sterling (£)	British Pounds Sterling (£)
4 weeks	1085	1915	4410
Each additional week	210	420	1040

Course fees include...

- Enrolment fee
- Placement test
- Pre-course training session
- Online Tuition
- Virtual learning environment - eAnglo
- Access to online teaching materials
- Certificate of Studies





Vacation Programme - Ages 16 - 17
Young Learners and Teenagers
Programme - Ages 10 - 16

Vacation, Young Learners and Teenagers Programme



Vacation Programme

The Vacation Course consists of 20 lessons per week of General English language lessons.

Classes

Your son/daughter will study in a lively international atmosphere with others whose levels of English are similar. Your son/daughter will be taught by a team of two or three teachers, who encourage participation and interaction between members of the group - and English will be the only language used!

Lessons

Your son/daughter will receive a balanced programme which includes grammar, skills development, and vocabulary development. The classes will be learner-centred. This means that students will take an active part in the classes and will be expected to speak with and listen to fellow students in pairs or small groups.

Homework

Homework forms an integral part of the course.

Progress

Lessons will include a variety of activities including games, quizzes, pair and group work, which will enable the teacher to assess your son/daughter's performance on a weekly basis. If your son/daughter's class reaches the end of a level, a longer test will be given to see if your son/daughter is ready to progress onto the next level.

Excursions, Sports and Leisure Activities

A variety of excursions, sports and leisure activities are a key part of this programme. The excursions and activities are carefully chosen to support continuous language development and to encourage students to practise their English skills outside of the classroom with other international students.



One-to-One Online Lessons

If you wish your child to take online lessons before or after completion of their course please refer to pages 30 - 32.



January to May

Vacation Course 2025

Course number	V-1.20
Course type	Vacation Course
Lessons per week <small>(lesson duration: 45 minutes)</small>	20
Language levels	Beginner* to Advanced
CEFR levels	A1* - C1
Class size	Average 13 (max.15)
Full day excursion	1 per week
Daytime leisure activities	5 per week
Age group	16 - 17
Course duration (weeks)	2 - 6
Courses held between	6 January - 15 February 24 March - 3 May
Course fees	British Pounds Sterling (£)
First 2 weeks	1120
Each additional week	470
Accommodation fees <small>British Pounds Sterling (£)</small>	Homestay Twin room
First 2 weeks	660
Each additional week	295
Single room supplement <small>(optional - per week)</small>	30

Course fees include...

- Enrolment fee
- Entry test
- Tuition
- Teaching materials
- Virtual learning environment - eAnglo
- Student card
- Certificate of Studies
- Orientation on the first day
- Wi-Fi
- Sports and leisure activities. Information available online: www.anglo-continental.com/vacation
- Excursions (including entrance fees). Information available online: www.anglo-continental.com/vacation

Accommodation fees include...

- Twin room from the Sunday before course commencement to the Sunday after its completion
- Light laundry - once per week
- Wi-Fi

Meals

- A hot lunch from Monday to Friday is taken at the centre. The homestay family will provide a packed lunch for the excursion on Saturday. All other meals are taken with the homestay family.
- Students who do not have homestay accommodation are required to pay £ 50 per week for lunches Monday to Friday.

Airport transfers

- See pages 54 - 55.

Please note

- English language lessons and sports/leisure activities may alternate between mornings and afternoons on a weekly basis
- Lessons may be integrated with the General English Course G-1.20.



These are prices for individual students. Contact us for a group quotation.

Course entry dates 2025

V-1.20	January 6*, 13, 20, 27	February 3*	March 24, 31*	April 7, 14, 22	May ~	June ~	July ~	August ~	September ~	October ~	November ~	December ~
---------------	------------------------------	----------------	------------------	--------------------	----------	-----------	-----------	-------------	----------------	--------------	---------------	---------------

* Beginners may start their courses only on the entry dates marked with asterisks (*)

Vacation Course 2025

Course number	V-2.20
Course Type	Vacation Course
Lessons per week <small>(lesson duration: 45 minutes)</small>	20
Language levels	Beginner* to Advanced
CEFR levels	A1* - C1
Class size	Average 13 (max.15)
Daytime leisure activities	5 per week
Full day excursion	1 per week
Age groups	16 - 17
Course duration (weeks)	2 - 10
Courses held between	9 June - 16 August
Course fees	British Pounds Sterling (£)
First 2 weeks	890
Each additional week	355
Accommodation fees <small>British Pounds Sterling (£)</small>	Homestay Twin Room
First 2 weeks	670
Each additional week	300
Single room supplement <small>(optional - per week)</small>	30

Course fees include...

- Enrolment fee
 - Entry test
 - Tuition
 - Teaching materials
 - Virtual learning environment - eAnglo
 - Student card
 - Certificate of Studies
 - Orientation on the first day
 - Wi-Fi
 - Sports and leisure activities.
- Information available online:
www.anglo-continental.com/vacation
- Excursions (including entrance fees).
- Information available online:
www.anglo-continental.com/vacation

Accommodation fees include...

- Twin room from the Sunday before course commencement to the Sunday after its completion
- Light laundry - once per week
- Wi-Fi

Meals

- A hot lunch from Monday to Friday is taken at the centre. The homestay family will provide a packed lunch for the excursion on Saturday. All other meals are taken with the homestay family.
- Students who do not have homestay accommodation are required to pay £ 50 per week for meals.

Airport transfers

- See pages 54 - 55.

Please note

- Lessons may be integrated with the General English Course G-1.20.
- The programme may alternate between mornings and afternoons on a weekly basis.



These are prices for individual students. Contact us for a group quotation.

"It's a kind place with lots of different people from all around the world. I feel more comfortable speaking English now."
Carmen, Spain

Course entry dates 2025 V-2.20

January ~	February ~	March ~	April ~	May ~	June 9*, 16, 23*, 30	July 7*, 14, 21*, 28	August 4	September ~	October ~	November ~	December ~
--------------	---------------	------------	------------	----------	----------------------------	----------------------------	-------------	----------------	--------------	---------------	---------------

* Beginners may start their courses only on the entry dates marked with asterisks (*)

All entrance fees are included in the course fees

London - sightseeing tour



Typical full-day excursions:

- London walking tour including sightseeing and shopping
- Windsor including a visit to Windsor Castle
- Longleat Safari Park
- The City of Bath and Stonehenge
- The New Forest National Park and the Wildlife Centre
- Thorpe Park - Theme park with rollercoasters and attractions
- Portsmouth - HMS Victory ship and shopping at Gunwharf Quays
- The University City of Oxford - visit to Magdalen College and shopping
- Bovington Tank Museum and Jurassic Coast
- Weymouth and the Sea Life Centre

Thorpe Park



Typical daytime sports and leisure activities:

- Walking tour of Bournemouth
- Mini golf
- Virtual reality centre
- A variety of sports
- Table tennis
- Treasure hunt
- Disco
- Quizzes
- Escape room
- Photography challenge
- Movie making
- Cinema
- Talent show
- Shopping trips
- Themed events
- Indoor games
- Silent disco
- Arts and crafts
- Beach games
- Ten-pin bowling
- British party games
- Laser Quest
- Dance and drama workshops
- Karaoke





IELTS Preparation Vacation Programme

At Anglo-Continental, we have a long successful history in preparing our students for English language examinations. The IELTS Preparation Vacation Course will prepare students for the highly regarded International English Language Testing System (IELTS) examination.

The course is designed to develop the necessary skills relevant to the IELTS examination and to present and practise language appropriate to the students' needs. Timed practice tests provide an idea of what it is like to work under pressure during a real examination.

IELTS Preparation Courses

Recognised worldwide, IELTS assesses the language ability of candidates who need to study or work where English is the language of communication. Our IELTS Preparation Vacation Courses are intended for those who wish to benefit from preparation for the IELTS test, which includes listening, speaking, reading and writing components.

The course aims to raise the students level of general English by providing 20 lessons per week of intensive English language study, combined with 10 lessons per week of practice for the IELTS examination. Teachers will familiarise students with the format of the examination and will introduce strategies for dealing with typical questions.

Homework

Homework forms an integral part of the course.

Excursions

Students will participate in weekend excursions and may choose to join the weekday leisure activity programme. The excursions and activities are carefully chosen to support continuous language development and to encourage students to practise their English skills outside of the classroom with other international students.



CAMBRIDGE ENGLISH
Language Assessment

Authorised Centre



Notes

A If you plan to take an examination, we recommend that you register for the examination in advance. Please check the website for examination closing dates: www.anglo-continental.com/examination

B If you would like an indication of your English language level, you can take an online test. This will be used as a guide and final

acceptance is subject to our examination pre-test or our entry test held at the school.

If you have not yet reached the required level, you can first enrol for a period of preparation on a General English Course. See pages 8 - 10.

June
July
August

IELTS Preparation Vacation Course 2025

Course number	V-4.30
Course type	IELTS Examination Practice + Vacation Course
Examination board	Cambridge English Language Assessment and the British Council See note A (page 38)
Examination Practice lessons	10
General English lessons	20
Total lessons per week <small>(lesson duration: 45 minutes)</small>	30
Language levels for entry	Pre-Intermediate See note B (page 38)
CEFR levels for entry	A2 See note B (page 38)
Examination Practice class size	Average 8 (Max. 12)
General English class size	Average 13 (Max. 15)
Full day excursion	1 per week
Age group	16 - 17
Course duration (weeks)	2 - 9
Courses are held between	16 June - 16 August
Course fees	British Pounds Sterling (£)
First 2 weeks	1170
Each additional week	470
Accommodation fees British Pounds Sterling (£)	Homestay Twin Room
First 2 weeks	670
Each additional week	300
Single room supplement <small>(optional - per week)</small>	30

Course fees include...

- Enrolment fee
 - Entry test
 - Tuition
 - Teaching materials
 - Virtual learning environment - eAnglo
 - Student card
 - Multi-media learning centre for personal study
 - Educational advisory service
 - Certificate of Studies
 - Orientation on the first day
 - Wi-Fi
 - Sports and leisure activities.
- Information available online:
www.anglo-continental.com/vacation
- Excursions (including entrance fees).
- Information available online:
www.anglo-continental.com/vacation

Accommodation fees include...

- Twin room from the Sunday before course commencement to the Sunday after its completion
- Light laundry - once per week
- Wi-Fi

Meals

- A hot lunch from Monday to Friday is taken at the centre. The homestay family will provide a packed lunch for the excursion on Saturday. All other meals are taken with the homestay family.
- Students who do not have homestay accommodation are required to pay £ 50 per week for meals.

Examination fees

- The examination fees 2025 are not included in the course fees. They are published on the website from October 2024.

Airport transfers

- See pages 54 - 55.

Please note

- Lessons may be integrated with the General English Course G-1.20
- The programme may alternate between mornings and afternoons on a weekly basis.

These are prices for individual students. Contact us for a group quotation.



Course entry dates 2025 V-4.30

January ~	February ~	March ~	April ~	May ~	June 16, 30	July 14, 28	August ~	September ~	October ~	November ~	December ~
--------------	---------------	------------	------------	----------	----------------	----------------	-------------	----------------	--------------	---------------	---------------



English for Young Learners and Teenagers Programme

The Young Learners English language and activity course consists of 20 General English language lessons per week.

Classes

Your son/daughter will study in a lively international atmosphere with others whose levels of English are similar. Your son/daughter will be taught by a team of two teachers, who encourage participation and interaction between members of the group - and English will be the only language used!

Lessons

The lessons will be stimulating and effective, with a variety of activities to develop your son/daughter's confidence, knowledge and skills:

- lively presentation and practice of new language
- rapid development of oral fluency, accuracy and conversation skills
- systematic development of listening, reading and writing skills
- extension of vocabulary, structure and usage

Excursions, Sports and Leisure Activities

A wide variety of excursions, sports and leisure activities are an integral part of the programme. Students develop their language during activities and excursions using quizzes and worksheets about the destination or activity. Excursions and activities are also followed up in class and students are encouraged to develop language through their experiences.



One-to-One Online Lessons

If you wish your child to take online lessons before or after completion of their course please refer to pages 30 - 32.



Safety and Student Support

The safety and wellbeing of our students is one of our top priorities.

Anglo-Continental has fully trained staff and facilities to provide a high standard of student support, safety and first aid.

Anglo-Continental operates a 24/7 helpline for emergencies.

Telephone:

(GB code) +(0)1202 55 74 14
or (GB code) +(0)78 3161 3193
(out of office hours only).

January to May

English Language and Activity Course 2025

Course number	C-1.20	
Course type	English Language and Activity Course	
Lessons per week <small>(lesson duration: 45 minutes)</small>	20	
Language levels for entry	Beginner* to Advanced	
CEFR levels for entry	A1* - C1	
Class size	Average 13 (max.15)	
Full day excursions	1 per week	
Daytime leisure activities	5 per week	
Age groups	10 - 16	
Course duration (weeks)	2 - 6	
Courses held between	6 January - 15 February 24 March - 3 May	
Course fees	British Pounds Sterling (£)	
First 2 weeks	1120	
Each additional week	470	
Accommodation fees <small>British Pounds Sterling (£)</small>	Homestay Twin Room <small>Age: 10 - 13</small>	Homestay Twin Room <small>Age: 14 - 16</small>
First 2 weeks	852	660
Each additional week	391	295
Supervised door-to-door car service to/from centre <small>6 return journeys per week</small>	Included	Optional 96 per week

Course fees include...

- Enrolment fee
- Entry test
- Tuition
- Teaching materials
- Student card
- Certificate of Studies
- Orientation on the first day
- Wi-Fi
- Sports and leisure activities. Information available online: www.anglo-continental.com/young-learners
- Excursions (including entrance fees). Information available online: www.anglo-continental.com/young-learners

Accommodation fees include...

- Twin room from the Sunday before course commencement to the Sunday after its completion
- Light laundry - once per week
- Wi-Fi

Meals

- A hot lunch from Monday to Friday is taken at the centre. The homestay family will provide a packed lunch for the excursion on Saturday. All other meals are taken with the homestay family.
- Students who do not have homestay accommodation are required to pay £ 50 per week for meals and supervision.

Airport transfers

- See pages 54 - 55.

Please note

- English language lessons and sports/leisure activities may alternate between mornings and afternoons on a weekly basis.



These are prices for individual students. Contact us for a group quotation.

"Every activity was great fun and it helped us to understand English better."
Diego, Argentina

Course entry dates 2025

C-1.20

January 6*, 13, 20, 27	February 3*	March 24, 31*	April 7, 14, 22	May ~	June ~	July ~	August ~	September ~	October ~	November ~	December ~
------------------------------	----------------	------------------	--------------------	----------	-----------	-----------	-------------	----------------	--------------	---------------	---------------

* Beginners may start their courses only on the entry dates marked with asterisks (*)

June
July
August

English Language and Activity Course 2025

Course number	C-2.20	
Course Type	English Language and Activity Course	
Lessons per week <small>(lesson duration: 45 minutes)</small>	20	
Language levels	Beginner* to Advanced	
CEFR levels	A1* - C1	
Class size	Average 13 (max.15)	
Full day excursions	1 per week	
Daytime leisure activities	5 per week	
Age groups	10 - 16	
Course duration (weeks)	2 - 10	
Courses held between	9 June - 16 August	
Course fees	British Pounds Sterling (£)	
First 2 weeks	1180	
Each additional week	500	
Accommodation fees <small>British Pounds Sterling (£)</small>	Homestay Twin Room <small>Age: 10 - 13</small>	Homestay Twin Room <small>Age: 14 - 16</small>
First 2 weeks	1002	810
Each additional week	466	370
Supervised door-to-door car service to/from centre <small>6 return journeys per week</small>	Included	Optional 96 per week

Course fees include...

- Enrolment fee
- Entry test
- Tuition
- Teaching materials
- Student card
- Certificate of Studies
- Orientation on the first day
- Wi-Fi
- Sports and leisure activities. Information available online: www.anglo-continental.com/young-learners
- Excursions (including entrance fees). Information available online: www.anglo-continental.com/young-learners

Accommodation fees include...

- Twin room from the Sunday before course commencement to the Sunday after its completion
- Light laundry - once per week
- Wi-Fi

Meals

- A hot lunch from Monday to Friday is taken at the centre. The homestay family will provide a packed lunch for the excursion on Saturday. All other meals are taken with the homestay family.
- Students who do not have homestay accommodation are required to pay £ 70 per week for meals and supervision.

Airport transfers

- See pages 54 - 55.

Please note

- English language lessons and sports/leisure activities may alternate between mornings and afternoons on a weekly basis.

These are prices for individual students. Contact us for a group quotation.



Course entry dates 2025

C-2.20

January	February	March	April	May	June	July	August	September	October	November	December
~	~	~	~	~	9*, 16, 23*, 30	7*, 14, 21*, 28	4	~	~	~	~

* Beginners may start their courses only on the entry dates marked with asterisks (*)

All entrance fees are included in the course fees



London Sightseeing Tour

Typical full-day excursions:

- London walking tour including sightseeing and shopping
- Windsor including a visit to Windsor Castle
- Longleat Safari Park
- The City of Bath and Stonehenge
- The New Forest National Park and the Wildlife Centre
- Thorpe Park - Theme park with rollercoasters and attractions
- Portsmouth - HMS Victory ship and shopping at Gunwharf Quays
- The University City of Oxford - visit to Magdalen College and shopping
- Bovington Tank Museum and Jurassic Coast
- Weymouth and the Sea Life Centre



The Roman City of Bath

Typical sports and creative leisure activities:

- Walking tour of Bournemouth
- Mini golf
- Virtual reality centre
- A variety of sports
- Table tennis
- Treasure hunt
- Disco
- Quizzes
- Escape room
- Photography challenge
- Movie making
- Cinema
- Summer fete
- Talent show
- Shopping trips
- Themed events
- Indoor games
- Silent disco
- Arts and crafts
- Beach games
- Ten-pin bowling
- British party games
- Laser Quest
- Dance and drama workshops
- Karaoke





Parent and Child Supplement

Anglo-Continental is pleased to offer English language programmes to parents who wish to study English or simply observe and attend the activities and excursions with their child attending a Young Learners or Young Adult Course.

Parent and Child Supplement (Young Learners Courses)

We can arrange for parents to participate in the Young Learners Programme as follows:

- Attend three activities with your child per week;
- Observe two activities per week;
- Attend one excursion with your child per week;
- Lunch with your child at the school Monday to Friday.

English Language Courses for the Parent

With our extensive range of English language courses for adults of all levels from General English, Business and Specialised English to Professional and Executive English language programmes the parent (or grandparent) can improve their English while their child (or grandchild) follows their own English language programme with activities and excursions.

English Language Courses for Young Learners (10 - 16)

Young Learners (aged 10 to 16 years) have a choice of English language programmes in January, March and April as well as in June, July and August.

English Language Courses for Young Adults (16+)

Young adults (aged 16+ years) have a choice of English language programmes throughout the year. Please refer to this prospectus or visit our website www.anglo-continental.com/young-learners for details of all courses for children and young adults.

Accommodation

We can arrange the same homestay accommodation for parents and children or, if preferred, accommodation can also be arranged with separate homestay families. Alternative accommodation arrangements can also be arranged for parents and children in hotels, guest houses or flats. Please visit our website www.anglo-continental.com/accommodation-options for details of accommodation and alternative accommodation options.



Parents can study on the same campus as their child



Parent and Child Supplement (per week)

British Pounds Sterling (£)

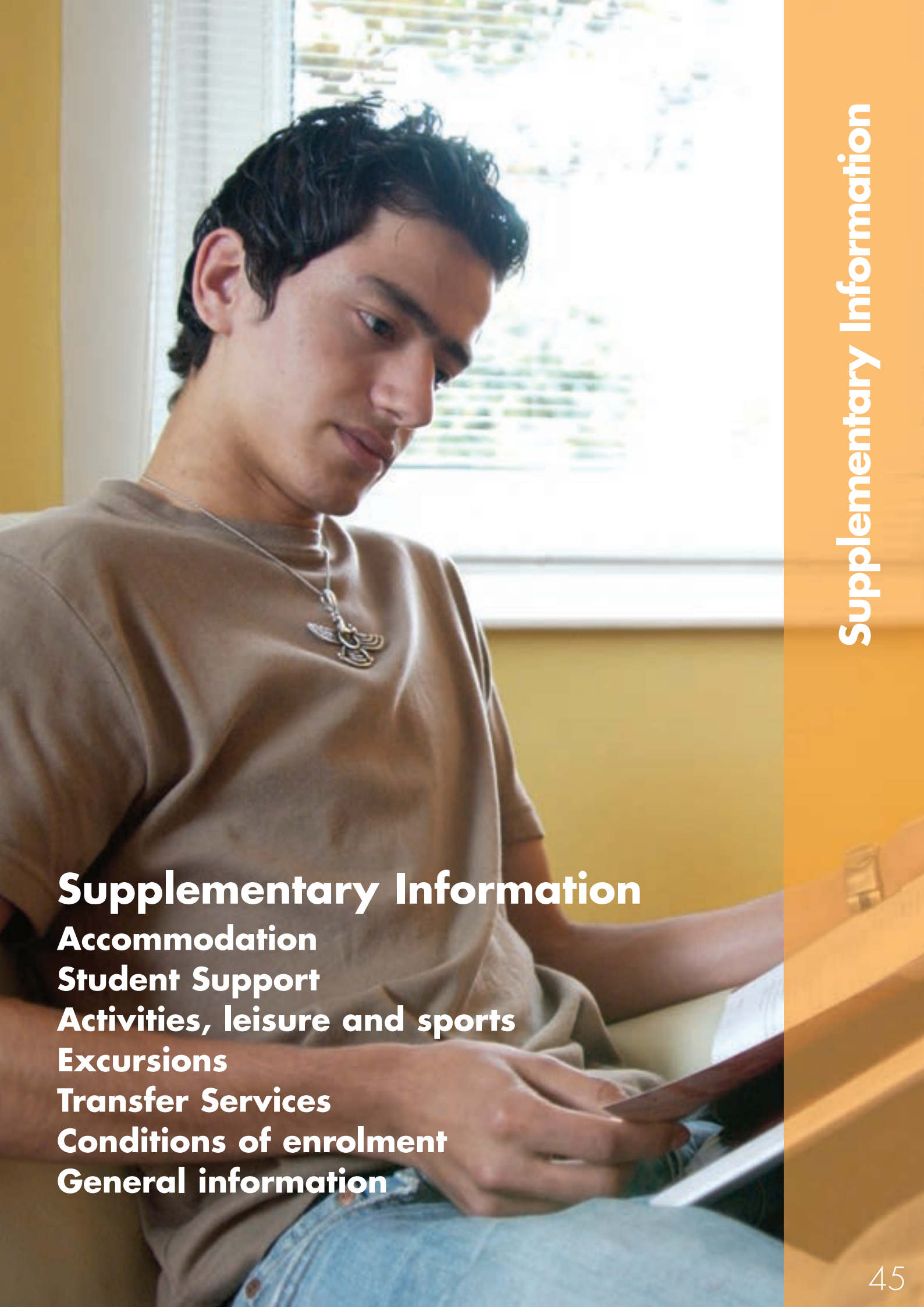
Young Learners C-1.20 175

Young Learners C-2.20 185

Vacation V-1.20 175

Vacation V-2.20 100

IELTS Preparation Vacation V-4.30 100



Supplementary Information

Accommodation

Student Support

Activities, leisure and sports

Excursions

Transfer Services

Conditions of enrolment

General information



Accommodation

Selection of homestay accommodation

Through careful homestay accommodation selection, we ensure that you are comfortable and well looked after during your course. All homestays registered with Anglo-Continental are regularly checked by our staff and evaluated by our students, to ensure that quality remains at a high standard. No more than three other students are accommodated in each homestay.

Anglo-Continental homestay accommodation is walking distance or a short bus journey from the school. The average journey time is 30 minutes. A weekly bus pass costs approximately £19.

Why stay in a homestay accommodation?

- Your host family will make you feel welcome and will help you with any concerns during your stay.
- You will enhance the language and cultural experience of your stay in England by living with a host family.
- You will be treated like a member of the family.
- Your host family will make time to speak with you at meal times and will invite you for a chat over a cup of tea. This is a great way to advance your English outside of the classroom.
- Your host family will also help you with practical matters such as how to get to school on your first day.

Important notice - students under 18 years

In accordance with British Council recommendations, we check that your host is suitable to accommodate students under 18 years of age by using the Disclosure and Barring Service (DBS).

Standard homestay accommodation includes:

- A pleasantly furnished single bedroom for students aged 18+. Twin room for students aged 16-17.
- Shared shower or bathroom and toilet facilities.
- 16 meals per week.
- Bed linen and towels are provided weekly.
- A supply of duvets and blankets are available.
- A light laundry service (one load per week).
- Wi-Fi.

Standard homestay accommodation with private bathroom (Age 18+ only) includes:

- Same as standard homestay accommodation plus
- Exclusive use of a shower or bathroom and toilet facilities.

Executive homestay accommodation (Age 18+ only) includes:

For students attending the Executive Programme, Business and Specialised, Aviation and Club 50+ Programmes:

- Same as Standard Homestay Accommodation with private bathroom
Plus
- A spacious, comfortably furnished bedroom
 - Our executive hosts provide an enhanced standard of hospitality and comfort

Young Learner, Teenager and Vacation homestay accommodation includes:

- A pleasantly furnished single/twin room.
- Shared shower or bathroom and toilet facilities.
- A hot lunch from Monday to Friday is taken at the school. All other meals are taken with the homestay family.
- Bed linen and towels are provided weekly.
- A supply of duvets and blankets are available.
- A light laundry service (one load per week).
- Wi-Fi.

"I thoroughly enjoy looking after students and have learnt so many interesting things and met some wonderful people. One of the most important aspects to hosting students is to eat with the students as much as possible in order to get to know them properly and make them feel welcome."

Mrs Langley, Homestay

Adult Homestay Accommodation Fees 2025 British Pounds Sterling (£)

	Standard - 16-17	Standard - 18+	Standard - 18+	Executive - 18+	Bed and breakfast
	Twin Room Shared Bathroom	Single Room Shared Bathroom	Single Room Private Bathroom	Single Room Private Bathroom	18+ Single Room Shared Bathroom
First week	270	270	325	385	255
Each additional week	200	200	255	315	185
High season supplement <small>(15 June to 2 August - per week)</small>	50	50	50	50	50
Single room supplement <small>(optional - per week)</small>	30	~	~	~	~
Special diet supplement <small>(optional - per week)</small>	35	35	35	35	10

Young Learner/Vacation Homestay Accommodation Fees 2025 British Pounds Sterling (£)

	C-1.20		C-2.20		V-1.20	V-2.20/V-4.30
	Twin Room		Twin Room		Twin Room	Twin Room
	Shared Bathroom		Shared Bathroom		Shared Bathroom	Shared Bathroom
	Age 10-13	Age 14-16	Age 10-13	Age 14-16	Age 16-17	Age 16-17
First week	461	365	536	440	365	370
Each additional week	391	295	466	370	295	300
Supervised door-to-door car service to/from centre <small>6 return journeys per week</small>	Included	96 <small>optional</small>	Included	96 <small>optional</small>	~	~
Guardianship fee <small>for under 16's studying for 4 weeks or more (per week)</small>	40	40	40	40	~	~
Single room supplement <small>(optional - per week)</small>	30	30	30	30	30	30
Special diet supplement <small>(optional - per week)</small>	35	35	35	35	35	35

Alternative accommodation

Alternative accommodation can be arranged on request for students over the age of 18 years:

- Student hotel accommodation
- Hotel
- Guest houses
- Bed and breakfast

- University residence

- Flats and apartments

Reservations made through Anglo-Continental are subject to a non-refundable administration fee of 5% of the total booking fee per room (minimum £25). Further details and suggested establishments are available on our website: www.anglo-continental.com/alternative.html



Student Support

Counselling service

When you are away from home, problems can arise. Most of these are easily solved with the help of our Student Services staff.

Our Student Support staff provide a confidential and discreet service for problems of a delicate or sensitive nature. The Student Support Team has a wealth of experience in dealing with international students and the variety of problems that might arise.

From your first contact with us to your last day at Anglo-Continental, we will give you all the help you need.

Students under 18 years of age

Anglo-Continental closely monitors students under 18 years of age. Any unauthorised absence is looked into by our Student Services staff. On the first day of school our Student Support Officer meets with new students under 18 years of age on Adult Courses to ensure that they are aware of the Anglo-Continental guidelines for students under 18. These students will also be asked to sign a statement to confirm that they understand and will follow these guidelines.





Safety and student support

The safety and wellbeing of our students is one of our top priorities. Anglo-Continental has fully trained staff and facilities to provide a high standard of student support, safety and first aid.

- Experienced, caring and approachable staff.
- British Council approved staff to student ratios. A high level of supervision for Young Learners.
- 24 hour supervision for students aged 13 and under.
- Door-to-door private car service for Young Learners. All drivers are checked with the Disclosure and Barring Service (DBS).
- The Young Learner/Teenager Courses are run in a secure building with special dedicated facilities solely used for the younger age groups.

- Students under 18 years of age are strictly monitored and any unauthorised absence is followed up by our staff.
- Private fostering families provide extra support for long-term students under the age of 16.
- Fully qualified and experienced first aid staff and a dedicated first aid room.





Activities, leisure & sports

Leisure

Bournemouth has all the leisure and entertainment facilities of a leading holiday resort:

- Cinemas and theatres with films and plays of every kind
- Concerts, exhibitions and other events of international calibre such as the Air Festival, One World by the Sea Festival, Food and Drink Festival and Arts by the Sea
- Every kind of music - including the famous Bournemouth Symphony Orchestra
- An exceptional choice of pubs, clubs and lively places of entertainment

Sports (some at extra cost)

You can select from a wide choice of sports activities:

- Every kind of water sport, including sailing, water-skiing, surfing and windsurfing in Bournemouth Bay or in Poole Harbour, Europe's largest natural harbour
- Swimming in the sea or in a choice of indoor pools
- Team games, such as football, volleyball and basketball
- Tennis, badminton, bowls and ten-pin bowling
- Gymnastics, squash, fitness training or martial arts
- Horse riding in the nearby New Forest National Park
- Golf - at a choice of excellent courses in Bournemouth





Social Activity Programme

Students aged 16 and over can participate in Anglo-Continental's social activity programme. Activities are free unless stated otherwise. Activities include the English language conversation club, the popular football club, Bournemouth walking tour, beach games and a variety of other sports and leisure activities.

Timetables

Download the social activity programme timetables: www.anglo-continental.com/leisure.html

All course and activity timetables can be found on the website: www.anglo-continental.com

Social Activities Programme for Students Aged 16+ Typical Timetable

MONDAY	TUESDAY	WEDNESDAY	THURSDAY	FRIDAY
 01 Games Social	 02 Boxercise or T Shirt Painting	 03 Board Games	 04 Volleyball or Plant Design	 05 Beach Picnic
 08 Bingo	 09 Dodgeball Tournament or Bracelet Making	 10 Movie Trivia	 11 Table Football Tournament or Reed Diffuser Making	 12 Mini Golf
 15 Movie Club	 16 Boot Camp or Origami	 17 Is It Cake?	 18 Football or Egg Parachutes	 19 British High Tea
 22 Sports Trivia	 23 Badminton or Bath Bombs	 24 Games Social	 25 Beach Games or Giving Back	 26 Axe Throwing
 29 Table Tennis Tournament	 30 Football or Baking	 31 Games Social		



Excursions

The Roman City of Bath



Saturday Excursions

Available for adult students to pre-book 14 June to 16 August 2025 for the duration of the course.



Stratford-upon-Avon



Excursions

At Anglo-Continental, we give you every opportunity to see the sights of Southern England. Throughout the year, we offer an extensive choice of guided excursions to interesting towns and cities, historic castles and stately homes, safari parks and areas of outstanding natural beauty. You can visit the great landmarks of London, go shopping in Oxford Street or see the world's leaders in the waxworks at Madame Tussaud's. You can visit the university city of Oxford or look around Winchester, the ancient capital of England. You can see the famous Lions of Longleat, Stratford-upon-Avon, Warwick Castle and many other fascinating places, according to your choice.

Visits and excursions are arranged to events of special interest, such as air displays, exhibitions and international sports fixtures, as they occur. Whatever your preferences, you will probably find them featured in the excursion programme.



Poole Harbour



Transfer services 2025

Recommended Option



Anglo-Continental's coach transfer services

On Arrival

- meet and greet at London Heathrow
- escorted transfer to school
- car to accommodation

On Departure

- car from accommodation to school
- escorted transfer to London Heathrow

London Heathrow Airport (LHR) to Accommodation

June 8, 15, 22, 29	July 6, 13, 20, 27	August 3
--------------------------	--------------------------	-------------

Day: Sunday
Time: Coaches depart between 08.00 to 20.00 hours.
For flights arriving between 08.00 to 18.00 hours.

Charge per person

£ 75

Accommodation to London Heathrow Airport (LHR)

June 22, 29	July 6, 13, 20, 27	August 3, 10, 17
----------------	--------------------------	------------------------

Day: Sunday
Time: Coaches depart between 05.00 to 16.00 hours.
For flights departing between 10.00 to 20.00 hours.

Charge per person

£ 75

Check-in Service for students on the Young Learners Programme

Courses C-2.20

A member of our team will check-in your child and accompany him/her to security. If you have pre-arranged Unaccompanied Minor services our team member will hand your son/daughter to the airline representative.

£ 90

Reservation and confirmation of flight details are required no later than 10 days in advance.



Anglo-Continental Car Transfer Services

Anglo-Continental offers a personal meet and greet service from any location in Great Britain at any time and on any day. You will be driven directly and comfortably to the destination.

You may be sharing a car with another student.

Anglo-Continental Car Transfer Services Charges 2025 per single journey

From/To	1 person
London Heathrow	£ 220
London Gatwick	£ 245
London City	£ 345
London Centre	£ 330
London Stansted	£ 325
London Luton	£ 265
Southampton Airport	£ 125
Bournemouth Airport	£ 80

Day: Any day
Time: Any time
Waiting time: The first 2 hours of waiting time are free of charge.
Extra waiting time is charged at £ 55 per 30 minutes.

Charge for second passenger travelling in the same car: £ 22

Check-in Service for students on the Young Learners Programme

Courses C-1.20 and C-2.20

A member of our team will check-in your child and accompany him/her to security. If you have pre-arranged Unaccompanied Minor services our team member will hand your son/daughter to the airline representative.

£90

Reservation and confirmation of flight details are required no later than 10 days in advance.



National Express Coaches and Megabus

National Express and Megabus provide coach services to the public. There are frequent services throughout the day, every day of the year and services from London Heathrow are direct to the Bournemouth Interchange.

You will need to take a taxi from the coach station to your accommodation. For full details of these services, current timetables and prices please visit www.nationalexpress.com and <https://uk.megabus.com>

Day: Any day
Time: Coaches depart regularly throughout the day.



National Rail

Train services from London Waterloo and Southampton Airport Parkway are direct and available every day of the year. Other airports are served by trains but are not direct and may involve a coach or the underground depending

on the particular airport. You will need to take a taxi from Bournemouth railway station to your accommodation. For full details of their services, current timetables and prices please visit www.nationalrail.co.uk

Anglo-Continental transfer information

Reservation

Anglo-Continental car and coach transfers must be booked no later than 10 working days before the date of arrival, stating:

- Name
- Mobile telephone number
- Student reference number
- Date of arrival
- Time of arrival
- Flight number
- Airport of departure
- Airport of arrival
- Details of connecting flight if applicable

Payment

Payment for transfers must be made before the date of provision of the service. Any additional charges, such as delayed arrival, must be paid on the first day of school.

Arrival at the airport

When you leave the Customs Hall, look for our Representative carrying a sign with the name of the school.



Full details of the meeting point are given in the confirmation documents.

Luggage allowance - car and coach transfers

Your free allowance is one piece of luggage of a standard size and shape weighing not more than 23kg, plus one item of hand luggage of not more than 10kg.

If your luggage does not conform with the above, an additional charge may have to be made. It is important that you advise us in advance if there is excess baggage so we can make appropriate arrangements, otherwise you may find that the excess luggage cannot travel with you and there may be additional charges.

Delayed arrival - car transfers

The driver will wait for 2 hours from the advised arrival time. If you are delayed further, for whatever reason, the driver will wait for up to an additional 2 hours and you will be charged £ 55 per 30 minutes. Any additional charges must be paid on the first day of school.

Possible waiting times for coach transfers

It is our aim to transfer you to Bournemouth as soon as possible after meeting our representative. However, Anglo-Continental cannot be held responsible for delays caused by

late arrival of incoming flights, congestion at UK Border Control, hold-ups at Customs or heavy traffic on the roads or any other event.

Young Learners travelling alone

If your son/daughter is under 16 years of age and is travelling without an adult, the transfer service and check-in service will automatically be reserved and invoiced. We advise you to check with the airline for rules and regulations regarding this. You will be responsible for any unaccompanied child airline service charges. On departure, a member of our team will take your child to the check-in counter and check him/her onto the flight and accompany him/her to security.

Transfers on British public holidays

Transfers on British public holidays may have a surcharge; please contact us for a special price.

Cancellation

Notice of cancellation or change of a transfer must be received in writing by the school before 12.00 hours (British Time) on the Wednesday prior to the scheduled day of arrival or departure. If such notice is not received within the period stipulated, we incur obligations to the transport companies and therefore the full charge must be paid.



Conditions of enrolment

All enrolments are subject to these conditions, which become legally binding on confirmation of acceptance by Anglo-Continental, and to the age limitations and arrangements specified in Anglo-Continental's official publications.

The enrolled student intends and is able to follow and complete the course of study at Anglo-Continental and declares that he/she shall abide by all current UK laws and leave the United Kingdom at the end of his/her studies.

Anglo-Continental reserves the right to withhold confirmation of an enrolment, at its discretion, if such action is deemed necessary in the interests of the student or the school or if an incorrect declaration has been made.

Fees

The fees for courses and accommodation are valid from 1 January to 31 December each year. The fees for the following year are normally published in July/August.

The fees must be received in full by Anglo-Continental no later than four weeks before course commencement, otherwise Anglo-Continental reserves the right to cancel, without notice, the course, accommodation and all other services. Course fees are calculated in complete weeks, and any part of a week is counted as a full week.

No compensation, fee reductions, refunds, credit, additional lessons or extension of the course can be given for:

- services or facilities included in the fees and not used;
- late entry to or absence or early departure from a course without formal curtailment;
- lessons replaced by testing, class allocation procedures or the sightseeing tour on course entry dates;
- days when schools are closed because of official holidays;
- cashless cards.

Any refunds which are approved can only be made by the office or Agent to whom the fees were originally paid. Anglo-Continental reserves the right to make fee adjustments as a result of changes to statutory taxes without prior notice.

Visas

If you require a visa, **it is your responsibility to ensure that you apply for the correct type of visa** to allow you to study at Anglo-Continental for the entire period of your course(s). You must ensure that all details on your confirmation documents issued by Anglo-Continental are correct before you apply for your visa. Anglo-Continental cannot be held liable for any errors that occur during the visa application process. It is also your responsibility to continue to maintain the correct immigration status to study at Anglo-Continental for the duration of your course(s). Failure to do so may lead to termination of your studies without refund or compensation.

School regulations

Anglo-Continental publishes regulations to ensure that the courses operate smoothly. Acceptance of and compliance with these regulations, and with English law, are contractual obligations on the part of the student or the parent, guardian or other person arranging the student's enrolment with Anglo-Continental where the student is under 18. The school regulations are available online:

www.anglo-continental.com/schoolregs.html

14 day cooling off period

The student may cancel an enrolment submitted online within 14 days from the date of submission. We will

fully refund the payment of course fees less any bank charges provided that written notice of cancellation is received by Anglo-Continental within 14 days of making the enrolment.

Cancellation, postponement or withdrawal from a course

A course is not transferable but may be cancelled and your payment of course fees will be refunded (except bank charges and non-refundable deposit), provided that written notice of cancellation, postponement or withdrawal is received by Anglo-Continental not less than four weeks before the scheduled date of course commencement. In the absence of such notice, or if less than four weeks' notice is received no refund of fees can be made.

No refunds can be given in the event of withdrawal from the course after its commencement, or for late arrival, early departure, or failure to make use of any of the facilities or activities of the course. In the absence of such notice, or if less than four weeks' notice is received:

- in the case of cancellation, a fee of £ 500 is payable in lieu of notice;
- in the case of postponement, Anglo-Continental reserves the right to levy a charge to cover administration and accommodation costs incurred on the student's behalf;
- should the application for a visa be refused, we will refund any published fees paid in advance (after deduction of an administration charge of £ 100) provided that you send us a copy of the letter of refusal before the intended start date of the course.

Any additional charges for services provided by a third party (such as hotel accommodation, flat rental and courier services) are not refundable.

Curtailment of a course

(Excluding courses with reduced fees)

If a course of more than eight weeks' duration is curtailed by the student, four weeks' notice must be given to the school. If no notice or insufficient notice is given, course fees must be paid in lieu of notice together with any accommodation charges due. In all cases, course fees must be paid for a minimum of eight weeks.

If a course of eight weeks' duration or less is curtailed, no refund of course fees can be given. Students must have personal insurance against inability to attend or continue a course for medical or compassionate reasons (see 'liability and insurance').

Change of course

(Excluding courses with reduced fees)

If, after commencement of a course, the student wishes to change to a course of a lower specification, two weeks' notice must be given to the school. If approved, the change must be made on a scheduled entry date for the new course.

Any refund due will be in the form of a credit towards any required extension of the amended course or towards any subsequent course with Anglo-Continental during the twelve months following the end of the amended course. The credit is not transferable to any other person and no cash refund can be given.

Incorrect declaration

Anglo-Continental reserves the right to withdraw a student from the course if an incorrect declaration has been made or if information regarding a student's ability to participate in the course has not fully, or partially, been disclosed to us before course commencement. In this case, no refund can be made.

English language level

Any information about your level received prior to your arrival will act as a guide only. Your English language level will be determined by our entry test on your first day. If you are not at the required level for your course, you will be transferred to a suitable alternative course.

Accommodation

The fee for the first week in homestay accommodation includes a non-refundable administration charge to cover the cost of selection, reservation and administration.

Any request to change or leave accommodation, either separately or in conjunction with the curtailment of a course, must be made to Anglo-Continental at least two weeks before the date of the proposed move and approved before the change is made. Failing this, accommodation fees are payable in lieu of notice. An administrative charge of £70 will be made for each request to change homestay family accommodation. Accommodation fees continue to be payable for any periods of absence during the course.

If a student fails to arrive within one day of the start date of his/her accommodation we reserve the right to cancel the students' booking. Please note that we may not be able to make a new accommodation placement.

Photography, film, sound recordings and written work

During our courses we sometimes take photographs, film footage and sound recordings, some of which may be incorporated into items such as, but not limited to, future publicity material, social media sites, tests and educational materials. We may also wish to use examples of your written work. If you do not wish to participate in any of these items, please advise Anglo-Continental in writing before the start of the course.

Liability and insurance

Anglo-Continental will not be liable for any loss, damage, illness or injury to persons or property, however caused, except where such liability is imposed by statute. Anglo-Continental will also not be held responsible for any delay in scheduled services of third party companies or if any service cannot be provided as specified. Any complaints, liabilities, losses or damages arising should be submitted to the third party company concerned. It is the student's responsibility to take out personal insurance against all such risks, including inability to attend or continue a course and for the payment of medical expenses.

Anglo-Continental is partnered with Endsleigh to offer a bespoke insurance policy that is specifically designed for you while partaking on our courses. Please check the website for the prices:

www.anglo-continental.com/enrolment

Transfer fuel surcharge

If a transportation company levies a surcharge because of an increase in the price of fuel, the additional cost will be charged to you. Please check the website for the latest charges:

www.anglo-continental.com/more-info/transfer-services

Force majeure

It shall be a fundamental condition of the contract between the student and Anglo-Continental or its Agents that neither Anglo-Continental nor its Agents shall be in any way liable to the student in the event of any service contracted to be supplied by them becoming impossible to supply by reason of industrial dispute or other cause outside their control.

Conditions of enrolment (continued)

Data protection

To ensure that your course at Anglo-Continental meets your requirements we and, if appropriate, the Anglo-Continental Agent in your own country will need to use the information you provide (such as your personal data and details of any special requirements) in order to process your enrolment.

We must pass your information on to those involved in providing you with services relating to your stay at Anglo-Continental such as, but not limited to, your reservation of accommodation and transfer services. The information may also be provided, if required, to security or credit-checking organisations, customs and

the Home Office as required by UK law.

Please note that where your information is held by an Anglo-Continental Agent, it will be subject to your Agent's own data protection policy and their country's national law.

Declaration form for students 16 and 17 years of age enrolled on Adult Courses

If your son/daughter will be 16 or 17 years of age at the time of the course, Anglo-Continental must receive a completed declaration form before course commencement. This form provides essential emergency contact information. In the absence of this

form, if an emergency situation arises, Anglo-Continental will make the best judgement on any action which needs to be taken based on professional advice available at the time of the emergency.

Validity of conditions

These Conditions of enrolment and Additional conditions for long-term courses are valid from 1 January 2025 and are subject to English law. The English language version is legally binding in all cases.

Anglo-Continental reserves the right to waive or adjust the specifications of a course, which may include age limits, without prior notification.

Additional conditions for long-term courses with reduced fees

Additional conditions apply to:

- Long-Term General Programme
Courses: G-1.20L/G-1.30L
- Academic Study Programme
Course: A-1.30

Curtailed of a course

If a long-term course is curtailed after its commencement, no refund of course fees can be given. It is the student's responsibility to take out personal insurance against inability to attend or continue a course for medical or compassionate reasons (see 'liability and insurance' on page 56).

Change of course

An enrolment for a long-term course may not be changed after course commencement except where the student wishes to prolong or include a course of a higher specification with the approval of the school.

School holidays

Students following long-term courses may apply to take holidays, in complete weeks from Monday to Friday, at times convenient to the programme and with the approval of the Academic Head. Holidays are allowed on the basis of a maximum of two weeks per twelve weeks of the programme and application must be made

to the school not less than two weeks in advance. In each case the total course duration will be extended to compensate for the number of weeks' holiday taken. Holidays may not be taken when following intensive Examination Practice or Business and Specialised options.

Anglo-Continental has a legal duty of care for students under 18 years of age. A holiday or break in stay can only be authorised once written permission has been received from the student's parent/guardian.

Additional conditions for Young Learner and Vacation Courses

School regulations

School regulations are designed to ensure that the courses function smoothly. Acceptance of and compliance with these regulations, and with English law, are contractual obligations on the part of the parent, guardian or other person arranging the student's enrolment with Anglo-Continental. The school regulations are available online: www.anglo-continental.com/schoolregs-yl.html

It is essential that your son/daughter understands that he/she must accept the regulations concerning 'Conduct and Discipline' and 'Permission to go out Without Supervision' as agreed by the Parent/Guardian.

Failure to observe the requirements of conduct described here and in the 'Student Handbook' may result in the student being returned home before the end of the course, without compensation. Anglo-Continental reserves the right to alter the student's travel arrangements.

It is the responsibility of the parent/guardian to arrange for an adult to meet the student at the place of arrival and at a time specified by Anglo-Continental.

Curtailed of a course

If a course is curtailed after commencement, no refund can be given. Parents or guardians must arrange insurance against inability to attend or continue a course for medical or compassionate reasons (see 'liability and insurance').

Accommodation

It is essential that your son/daughter understands that:

- he/she will be sharing accommodation with other students and must observe the accepted standards of courtesy and consideration towards others;
- he/she will be expected to make his/her own bed, help to keep the room tidy and leave bathrooms and toilets clean for other users;

c) he/she must observe the bedtimes stated by the homestay family - normally not later than 22.30 hours.

Supervised door-to-door car service

The supervised door-to-door car service is compulsory for students aged 10 - 13 years and is included in the accommodation fees.

Young Learners/Vacation Course Declaration Forms

Anglo-Continental must receive a completed declaration form before your son/daughter commences his/her course. This form provides essential emergency contact information. In the absence of this form, if an emergency situation arises, Anglo-Continental will make the best judgement on any action which needs to be taken based on professional advice available at the time of the emergency.

Additional conditions for Online Courses

Recording

Online lessons may be recorded for quality and training purposes.

Cancellation or change of time of an Online One-to-One Course

Notice of cancellation or change of time of an online one-to-one course must be received in writing by the school at least 24 hours (1 business day) prior to the scheduled online lesson. If such notice is not received within the stated period then the full course remains due.

If your teacher is not available, for any reason, then a relief teacher will carry out your online lesson.

Online Group General English Courses

No compensation, fee reductions, refunds, credit, additional lessons or extension of the course can be given for:

- services included in the fees and not used;
- late entry to or absence or early departure from a course;
- lessons replaced by testing.

No lessons will be provided during Anglo-Continental's holidays or during national holidays declared by the British Government. If a lesson coincides with any of these dates then a lesson will be added to the end of the course. For these dates please refer to the General Information on page 58.

General information

How to enrol

Please complete the online enrolment form: <https://www.anglo-continental.com/enrolment/enrolment-form>. Alternatively, you can download and print a pdf enrolment form from the website: <https://www.anglo-continental.com/enrolment>.

- Choose the course or courses you wish to attend
- Select the entry date and decide how many weeks you wish to study
- Complete the accommodation section
- Decide if you wish to use a car or coach transfer from the place of arrival in England to Bournemouth
- Decide if you wish to take out International Student Travel Insurance with Anglo-Continental or arrange your own insurance for the duration of your course
- Select where, when and how you wish to pay your fees
- Send the completed 'Enrolment form' to our Agent in your country. Alternatively submit it online, email or post it to Anglo-Continental.
- If you have enrolled on an Executive, Business and Specialised or Teacher Training Course we will send you the pre-training assessment form to complete and return to our Agent in your country. Alternatively email or post it to Anglo-Continental.

Our confirmation

When your 'Enrolment form' is received and accepted by the school, the following documents will be emailed to you:

- A letter of confirmation of enrolment
- An invoice for the full amount of the fees due
- Your accommodation address (due to the careful procedure involved in selecting your accommodation, the address may be sent to you at a later date)
- Our 'Student Handbook'

If you require a visa, we can only send the relevant documents to you after we have received your deposit of £ 500 (deductible when you pay your fees) or the full amount of the fees due.

Declaration form - Students aged 16/17 years old

As a school accredited by the British Council, Anglo-Continental must follow strict regulations regarding the acceptance of students under 18 years of age. Therefore, if your son/daughter is under 18 years of age at the time he/she attends the course you must complete the Declaration for Students aged 16/17 years old. This form is available to download from the website:

<https://www.anglo-continental.com/enrolment>.

Please send the completed form to our Agent in your country or to Anglo-Continental, to arrive no later than 10 days before the date of course commencement.

Declaration form - Young Learner and Teenager Courses

For your son/daughter's security and well-being, it is essential that you complete the Declaration form. This form is available to download from the website:

<https://www.anglo-continental.com/enrolment>.

Please send the completed declaration form to our Agent in your country or to Anglo-Continental, to arrive no later than 10 days before the date of course commencement.

Student Support and medical assistance

- Arrangement of emergency medical and dental treatment as provided by the British National Health Service
- Medical services and assistance with personal problems

Student care and security on Young Learners Courses

- High level of supervision for all organised activities
- Safety checks
- Students under 16 years of age are supervised during the school's scheduled programme and when they are with the homestay family. Young Learners/Teenagers aged 14 - 16 are supervised at all times, except if we have received written permission from the parent/guardian for them to go out unaccompanied.

Health and safety of Young Learners

In all our activities, we pay particular attention to the health, safety and well-being of our young learners.

Our priorities include:

- A high ratio of staff to students for close supervision of every school activity
- Activities appropriate to students' ages and capabilities
- Comprehensive arrangements for welfare and medical care
- Escorted airport transfers on arrival and departure
- Supervised door-to-door car service between homestay accommodation and the course centre (Young Learner and Teenager Courses only - where selected)
- Careful selection of homestay accommodation
- Regular safety checks of students under 18 years of age

Entry to England

When you pass through UK Border Control on arrival in England, you will be required to show your:

- Passport
- Visa (if required)
- Confirmation of enrolment from Anglo-Continental
- Copy of the bank's transfer confirmation, or other evidence that you have paid your fees to Anglo-Continental or its Agent.

Student travel insurance

For your protection and peace of mind you should have comprehensive travel insurance, which should include any possible cancellation or curtailment charges. Such insurance may be obtained through Anglo-Continental or your own travel adviser.

Anglo-Continental is partnered with Guard.me to offer a bespoke insurance policy that is specifically designed for you while partaking on our courses. We are working together to ensure you have adequate Insurance for your course while in the UK and to provide complete peace of mind. If you are in the process of applying for a course or have already secured your place you may want to consider what level of insurance protection you have in place in case the worst were to happen. Taking out your travel insurance at the time of booking your course is a really good idea as cover for pre-departure cancellation starts from the policy issue date. This means you'll have cover to recoup your costs if you have to cancel your course for an insured reason such as illness or serious accident preventing you from travelling. Please check the website for the prices: www.anglo-continental.com/enrolment

Lesson duration

Face-to-face lessons are 45 minutes' duration.

20 lessons per week = 15 hours

25 lessons per week = 18 hours 45 minutes

30 lessons per week = 22 hours 30 minutes

40 lessons per week = 30 hours

Online lessons are 60 minutes' duration.

Timetables

Sample timetables can be downloaded from the website: www.anglo-continental.com

School and national holidays

Anglo-Continental is closed:

21 December 2024 to 5 January 2025 for 2 weeks.

20 December 2025 to 4 January 2026 for 2 weeks.

Anglo-Continental is also closed on official national holidays declared by the British Government. Those scheduled for 2025 are: 1 January, 18 April, 21 April, 5 May, 26 May and 25 August.

If your entry date coincides with an official holiday, your accommodation will still be reserved for you from the Sunday before your course commences, and we would advise you to plan to arrive on that day. Your course will begin with the entry test on the next working day following the holiday.

No compensation, fee reductions, refunds, credit, additional lessons or extension of the course can be given for days when the school is closed because of official holidays.

General information continued

Accommodation during school holidays

If you are attending a course which continues after the school holiday, 20 December 2025 to 4 January 2026, homestay accommodation will be upgraded to full board during the holiday, at a supplement of £ 70 per week. This will be automatically reserved and invoiced. If you do not require this accommodation, you must inform us at least 4 weeks before the holiday period and we will arrange a full refund.

UK visa requirements

If you are unsure whether you will need a visa to study in the UK, visit the Home Office website at: www.gov.uk/visas-immigration
You may also wish to consult your nearest British Embassy or Consulate.

If you require a visa in order to study in the UK, we strongly recommend that you apply for your course as early as possible as the application procedure may take several weeks to complete. Before issuing a visa letter, Anglo-Continental must be in receipt of a deposit of £ 500 (deductible when you pay your fees) or the full amount of the fees due.

It is your responsibility to ensure that you apply for the correct type of visa to allow you to study at Anglo-Continental for the entire period of your course(s). You must ensure that all details on your confirmation documents issued by Anglo-Continental are correct before you apply for your visa. Anglo-Continental cannot be held liable for any errors that occur during the visa application process. It is also your responsibility to continue to maintain the correct immigration status to study at Anglo-Continental for the duration of your course(s). Failure to do so may lead to termination of your studies without refund or compensation.

We strongly recommend that you send a scanned copy of your visa to us to check prior to your departure to the UK.

Refund guarantee

Should your application for a visa be refused, we will refund any published course fees paid by you (after deduction of an administration charge of £ 100) provided that you send us a copy of the letter of refusal before the intended start date of your course.

Any additional charges for services provided by a third party (such as hotel accommodation, flat rental and courier services) are not covered by this guarantee.

Schengen visa

If you require a visa to travel to the UK and you intend to travel within Europe during your stay, it is advisable that you also obtain a Schengen visa before you travel to the UK. The Schengen visitor visa has made travelling between its 29 European member countries much easier. For further information, visit the Schengen visa website at www.schengenvisa.cc



Other Anglo-Continental Publications

Aviation Prospectus (available online only)

- Test of English for Aviation Personnel (TEAP)
- Introduction to Aviation English Course
- English for Pilots and Air Traffic Controllers - ICAO Course 291
- Professional Training Course for Raters
- Teaching Methodology Course for Aviation English Teachers
- Aviation English Language Training Courses

English for:

- Aeronautical Information Services (AIS)
- Air Navigation
- Aviation Management
- Aviation Security
- Cabin Crew
- Engineering in Aviation
- Meteorology



75 years' - teaching English to the world!



Anglo-Continental

29-35 Wimborne Road, Bournemouth BH2 6NA, England

Telephone (GB code) +(0)1202 55 74 14

Email english@anglo-continental.com

Website www.anglo-continental.com

