



# 2025 Accommodation


## Vancouver, Canada






# Homestay


Our homestays are carefully selected and offer students the opportunity to learn more about Canadian culture in a comfortable setting while studying English in Vancouver.




welcoming & friendly atmosphere



single and twin room options



good & reliable transport links



## Key Information

- Carefully selected by our Accommodation Coordinator and visited on a regular basis
- Choice of single rooms (or twin rooms if two students book for the same time period) with bed and breakfast or half-board
- Bed linen and towels provided
- Average commute time from homestays is 60 minutes by public transportation
- Good and reliable public transportation
- **CA \$215 placement fee for all accommodation**



# Executive Homestay Option (Private Bathroom)

Executive Homestays offer a private bathroom (en-suite or sole use). Limited availability; please contact if interested.

## Homestay Prices

	Homestay Weekly Rates (per person per week)	Extra Night Rates (per person per night)**
Single room, B&B	CA \$255	CA \$75
Single room, Half Board	CA \$290	CA \$80
Twin room*, B&B	CA \$240	CA \$85
Twin room*, Half Board	CA \$280	CA \$70

Supplemental Rates (per person per week)	
Summer Supplement (Jun 16 – Aug 25)	CA \$80
Special Diets B&B / HB	CA \$ 30 / 50
Christmas Supplement (Dec 23 - Jan 3, 2025)	CA \$55
Executive Supplement	CA \$90
U18 Supplement	CA \$25

Key  
 B&B = Bed and Breakfast (Breakfast only)  
 HB = Half Board (Breakfast and Dinner)  
 FB = Full Board (Breakfast, Lunch, and Dinner)

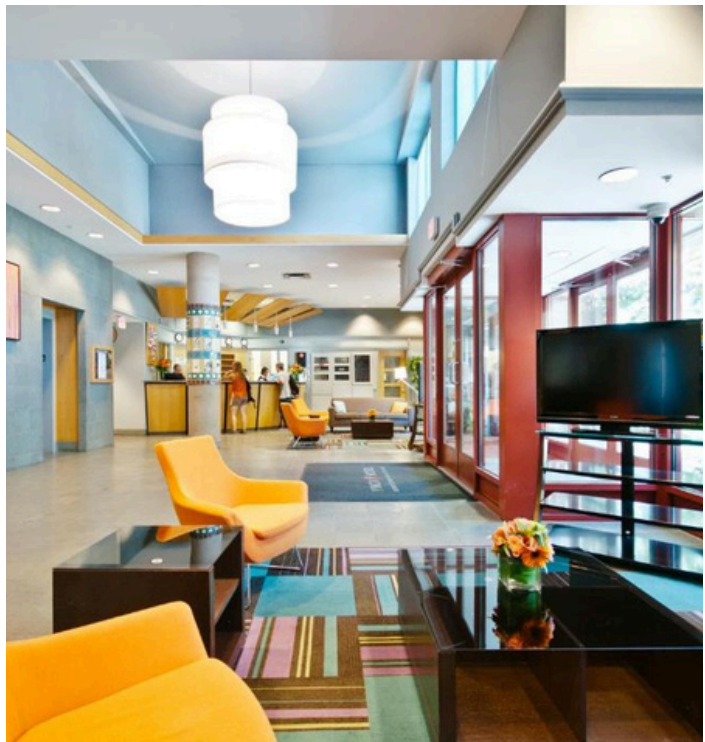
\*For students booking together with the same arrival and departure dates.  
 \*\*Extra nights are subject to availability. Please check with the school before booking flights. No extra nights during the Summertime.



# Residences & Hostels

These options are more suitable for an independent student who is looking for a clean and basic accommodation at an affordable price. All students must be 18 or older, unless noted otherwise.

## YWCA Hotel / Residence



### Location

Centrally located in downtown Vancouver. 15 minute walk from LSI Vancouver.

### Minimum age

18

### Rooms

Single

### Private Bathroom

No, shared bathrooms or semi-private wash room

### Meals

Self-catering

### Facilities

Free Wi-Fi, air conditioning, telephone, iron, ironing board, lounge with TV, cafe, fitness facilities, shared kitchen, laundry.

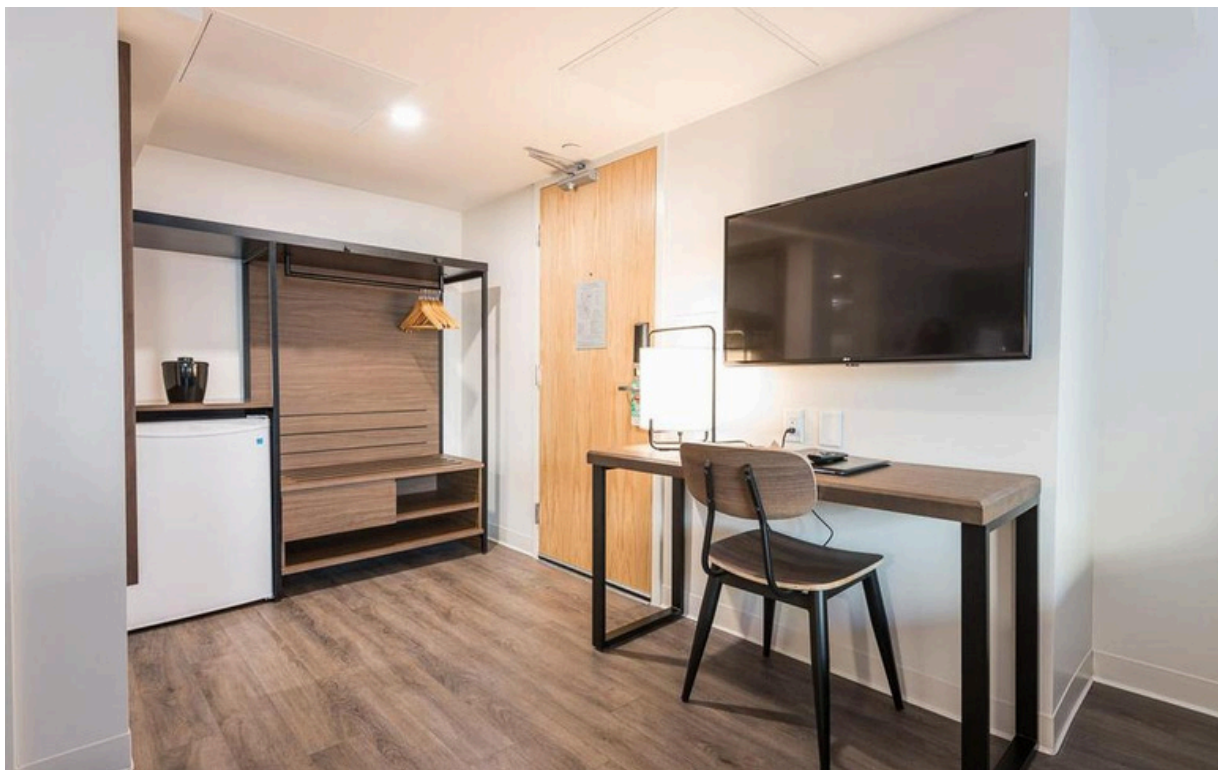
### Availability

Year round.

Peak Season: May 1 - September 30



## YWCA Hotel / Residence *continued...*



### Other

Bed linen provided, 24/7 security.

A non-refundable placement fee of CA \$230 per student is required for all bookings. No room will be confirmed until this fee has been paid. If the residence has no availability, the placement fee is refundable.

#### *Note 1:*

Once a booking has been made, fees for changes and/or early checkouts will be assessed and charged. Stays longer than 4 weeks are not accepted during peak season. Monthly rates are only available for 4 week intervals, any additional weeks will be calculated at weekly rates.

#### *Note 2:*

Any changes to the dates of the accommodation must be made with at least two weeks notice if the student decides to postpone their course, and a fee will be applied.

2025 Prices (per person)	Per week
Single room, shared bathroom (off season)	From CA \$770
Single room, shared bathroom (peak season)	From CA \$770
Single room, semi private washroom (off season)	CA \$930
Single room, semi private washroom (peak season)	CA \$1,300
Double room, private bathroom	CA \$590

\*30 day minimum, off season only

## GEC Marine Gateway



### Location

Student residence located in the heart of Vancouver. It features modern interior designs, energy efficient amenities, and a beautifully landscaped courtyard. 25 minutes by bus to LSI Vancouver.

### Minimum age

18

### Rooms

Sectioned rooms, studio apartments, and one/two bedroom apartments available

### Meals

Self-catering

### Facilities

Fully furnished apartments with equipped kitchen, bathrooms with bathtub and shower, in-suite laundry, additional storage space, unlimited high-speed wireless internet.

### Availability

Year round. 5 weeks minimum stay.

### Other

24/7 building CCTV, housekeeping, paid underground parking available.

Refundable security deposit (two weeks rent) and non-refundable amenities fee (CA \$210) to be paid directly to GEC in order to confirm room.

Any changes to the dates of accommodation must be made with at least two weeks notice if the student decides to postpone their course, and a fee will be applied.

2025 Prices (per person per week)	5-23 weeks	24+ weeks
Sectioned (semi-private) bedroom, shared bathroom	CA \$475	CA \$450
Private bedroom, shared bathroom	CA \$635	CA \$610
Studio Apartment	CA \$865	CA \$845
One-Bedroom Apartment	CA \$910	CA \$890
Two-Bedroom Apartment	CA \$1265	CA \$1230

## GEC Pearson



### Location

The brand-new student housing building is in a large peaceful and quiet neighborhood, with the beautiful Langara Golf Course across the street. 30 minutes by bus to LSI Vancouver.

### Minimum age

18

### Rooms

Shared/sectioned rooms, private rooms, and private apartments available

### Meals

Self-catering

### Facilities

Fully furnished apartments with equipped kitchen, bathrooms with bathtub and shower, in-suite laundry, additional storage space, unlimited high-speed wireless internet.

### Availability

Year round. 5 weeks minimum stay.

### Other

24/7 building CCTV, housekeeping, paid underground parking available.

Refundable security deposit (two weeks rent) and non-refundable amenities fee (CA \$210) to be paid directly to GEC in order to confirm room.

Any changes to the dates of accommodation must be made with at least two weeks notice if the student decides to postpone their course, and a fee will be applied.

2025 Prices (per person per week)	5-23 weeks	24+ weeks
Shared bedroom, shared bathroom	CA \$435	CA \$415
Sectioned (semi-private) bedroom, shared bathroom	CA \$475	CA \$455
Private bedroom, shared bathroom	CA \$540	CA \$520
Studio Apartment (inclusive)	CA \$970	CA \$950

## GEC King Edward



### Location

New student residence nestled in the city's vibrant heart, located in the culturally rich neighbourhood of Cambie Village close to Queen Elizabeth Park. 20 minutes by transit to LSI Vancouver.

### Minimum age

18

### Rooms

Shared and private rooms available within a shared apartment

### Meals

Self-catering

### Facilities

Fully furnished apartments with equipped kitchen, bathrooms with bathtub and shower, in-suite laundry, Wi-Fi, multifunctional amenities room with a patio for all guests, paid underground parking.

### Availability

Year round. 5 weeks minimum stay.

### Other

24/7 building CCTV. Light common room cleaning. Students are responsible for cleaning their own room and common areas thoroughly.

Refundable security deposit (two weeks rent) and non-refundable amenities fee (CA \$210) to be paid directly to GEC in order to confirm room.

Any changes to the dates of accommodation must be made with at least two weeks notice if the student decides to postpone their course, and a fee will be applied.

2025 Prices (per person per week)	5-23 weeks	24+ weeks
Shared bedroom, shared bathroom	CA \$445	CA \$415
Private bedroom, shared bathroom	CA \$565	CA \$545
One-Bedroom Apartment	CA \$925	CA \$905